

# The SKF Microlog series catalogue



The industry's premier range of portable, handheld data collectors and analyzers



# SKF Microlog series

## Data collectors and analyzers

Unmatched versatility, reliability and functionality have made the SKF Microlog Analyzer series of data collectors the premier choice for portable, handheld condition monitoring units.

Designed to help users establish or upgrade an existing condition monitoring program, SKF Microlog Analyzers handle the tasks required to perform predictive maintenance on rotating machinery in countless industries.

### Data capture from a range of sources

SKF Microlog Analyzers automatically collect both dynamic (vibration) and static (process) measurements from almost any source, including handheld and magnetically mounted accelerometers, permanently mounted vibration sensors or on-line monitoring systems. Temperature measurements can be collected with a non-contact infrared sensor or with a contact probe.

### State-of-the-art operating technology

With robust, high-speed data processors and optimum data storage capacity, SKF Microlog Analyzers are equipped to operate within today's most advanced computerized maintenance management systems. Units can be purchased with a range of individual modules and accessories for specific types of analysis required to meet their plant's monitoring needs.

### SKF Microlog models

- SKF Microlog Analyzer AX series (CMXA 80)
- SKF Microlog Analyzer GX series (CMXA 75)
- SKF Microlog Analyzer, ATEX and IECEx certified (CMXA 51-IS)



# Contents



SKF Microlog Analyzer AX series (CMXA 80)

7



SKF Microlog Analyzer GX series (CMXA 75)

15



SKF Microlog Analyzer CMXA 51-IS

23



SKF Microlog application modules

27



Software and SKF Product Support Plan

43

# SKF – the knowledge engineering company

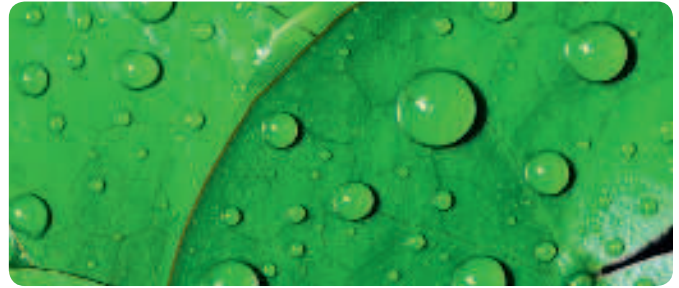
From one simple but inspired solution to a misalignment problem in a textile mill in Sweden, and fifteen employees in 1907, SKF has grown to become a global industrial knowledge leader.



Over the years, we have built on our expertise in bearings, extending it to seals, mechatronics, services and lubrication systems. Our knowledge network includes 46 000 employees, 15 000 distributor partners, offices in more than 130 countries, and a growing number of SKF Solution Factory sites around the world.

## Research and development

We have hands-on experience in over forty industries based on our employees' knowledge of real life conditions. In addition, our world-leading experts and university partners pioneer advanced theoretical research and development in areas including tribology, condition monitoring, asset management and bearing life theory. Our ongoing commitment to research and development helps us keep our customers at the forefront of their industries.



## Meeting the toughest challenges

Our network of knowledge and experience, along with our understanding of how our core technologies can be combined, helps us create innovative solutions that meet the toughest of challenges. We work closely with our customers throughout the asset life cycle, helping them to profitably and responsibly grow their businesses.

## Working for a sustainable future

Since 2005, SKF has worked to reduce the negative environmental impact from our operations and those of our suppliers. Our continuing technology development resulted in the introduction of the SKF BeyondZero portfolio of products and services which improve efficiency and reduce energy losses, as well as enable new technologies harnessing wind, solar and ocean power. This combined approach helps reduce the environmental impact both in our operations and our customers' operations.

*SKF Solution Factory makes SKF knowledge and manufacturing expertise available locally to provide unique solutions and services to our customers.*

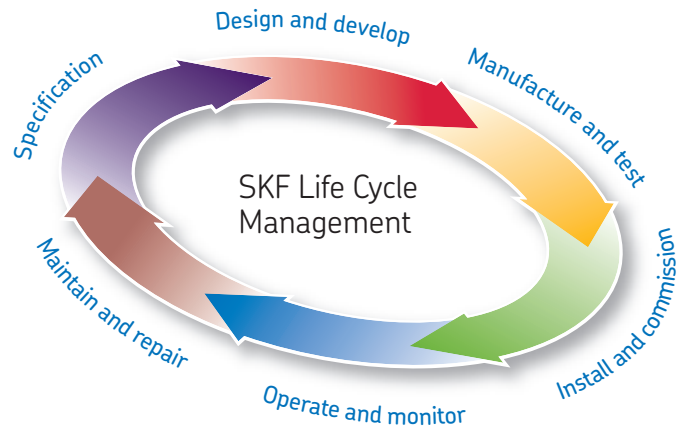


*Working with SKF IT and logistics systems and application experts, SKF Authorized Distributors deliver a valuable mix of product and application knowledge to customers worldwide.*



## Our knowledge – your success

**SKF Life Cycle Management is how we combine our technology platforms and advanced services, and apply them at each stage of the asset life cycle, to help our customers to be more successful, sustainable and profitable.**



### Working closely with you

Our objective is to help our customers improve productivity, minimize maintenance, achieve higher energy and resource efficiency, and optimize designs for long service life and reliability.



### Bearings

SKF is the world leader in the design, development and manufacture of high performance rolling bearings, plain bearings, bearing units and housings.

### Innovative solutions

Whether the application is linear or rotary or a combination, SKF engineers can work with you at each stage of the asset life cycle to improve machine performance by looking at the entire application. This approach doesn't just focus on individual components like bearings or seals. It looks at the whole application to see how each component interacts with each other.



### Machinery maintenance

Condition monitoring technologies and maintenance services from SKF can help minimize unplanned downtime, improve operational efficiency and reduce maintenance costs.

### Design optimization and verification

SKF can work with you to optimize current or new designs with proprietary 3-D modelling software that can also be used as a virtual test rig to confirm the integrity of the design.



### Sealing solutions

SKF offers standard seals and custom engineered sealing solutions to increase uptime, improve machine reliability, reduce friction and power losses, and extend lubricant life.



### Mechatronics

SKF fly-by-wire systems for aircraft and drive-by-wire systems for off-road, agricultural and forklift applications replace heavy, grease or oil consuming mechanical and hydraulic systems.



### Lubrication solutions

From specialized lubricants to state-of-the-art lubrication systems and lubrication management services, lubrication solutions from SKF can help to reduce lubrication related downtime and lubricant consumption.



### Actuation and motion control

With a wide assortment of products – from actuators and ball screws to profile rail guides – SKF can work with you to solve your most pressing linear system challenges.





# SKF Microlog Analyzer AX series

## CMXA 80

### Advanced data collector / FFT analyzer

The SKF Microlog Analyzer AX is the most advanced large screen route based analyzer offered by SKF today. The SKF Microlog AX's features allow you to capture a wide range of vibration data quickly.

The analyzer provides the flexibility to support applications that are most important to your company's specific predictive maintenance program. Developed for use in a wide range of industries, the SKF Microlog AX series is approved for use in hazardous environments requiring ATEX, IECEx and Class I Division 2 certifications.

### Key features

- Simultaneous triaxial or four channel measurements for fast data collection
- Marvell 806 MHz PXA320 processor means faster real time rate and display updates
- Rugged, dust / waterproof IP 65 design for reliability in industrial environments
- Rechargeable lithium battery supports eight hours of continuous data collection
- Large 6.4 in. VGA color display for easy viewing and analysis in any light

### SKF Microlog Analyzer AX series

The SKF Microlog AX facilitates easier, more powerful condition monitoring by analyzing vibration signals and process variables using four channel non-route measurements and one or two plane static or dynamic couple balancing applications over a range of 0,16 Hz to 80 kHz (10 to 4 800 000 CPM). Bearing assessments are carried out using the industry proven SKF Acceleration Enveloping (gE) technology. The SKF Microlog AX utilizes the latest advances in analog and digital electronics, including digital signal processing (DSP) and high resolution sigma-delta A/D converters, to provide both speed and accuracy in the data collection process.



*SKF Microlog AX is a full-featured, four channel, high performance route and non-route portable data collector/FFT analyzer.*

### Modular approach offers seamless expansion

The modular design of the SKF Microlog AX series offers customers the option to upgrade and expand functionality without having to buy another instrument. Accessories are inter-changeable between models. The SKF Microlog AX is shipped with the full SKF Microlog suite of modules installed. To add additional functionality, units can be upgraded to more advanced models, simply purchase the module and enter the supplied license key.

The SKF Microlog AX-M includes multiple routes, and non-route data collection, four channel FFT analysis, three channel simultaneous triax and the Balancing module.

Additional features are added to create the SKF Microlog AX-F model, which includes all modules. The SKF Microlog AX-M can also be upgraded to any of the other modules including Run up Coast down module that is used to record and analyze data from machines where noise or vibration levels are changing with speed or time, and the Frequency Response Function (FRF) module, which uses a modal hammer to establish the properties of mechanical structures.

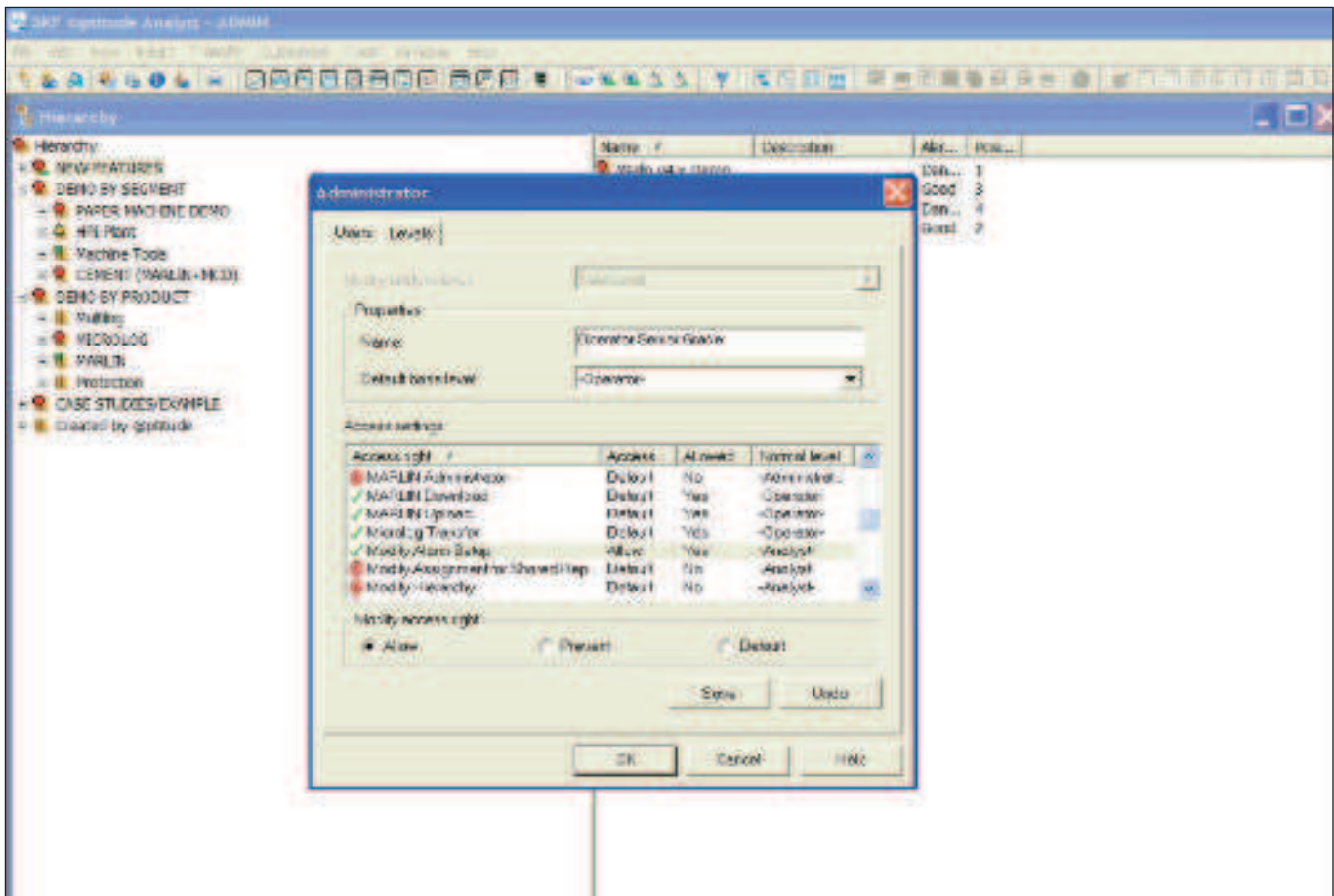
## SKF @ptitude Monitoring Suite

### Asset data available fast, enterprise wide and in the formats you want

The route based SKF Microlog AX transfers data to SKF @ptitude Analyst software, a comprehensive software solution with powerful diagnostic and analytical capabilities. SKF @ptitude Analyst provides fast, efficient and reliable storage, analysis, and retrieval of complex asset information and makes the information accessible throughout your entire organization. With this powerful analysis tool, you are in complete control – from how you set up hierarchies, filtered workspaces, routes, and analysis parameters, to the customized format for reporting. You can collect information based on location, machine type, frequency, or other selections. SKF @ptitude Analyst allows you to determine the appropriate limits for alarm conditions and how alarms are categorized, so you receive consistent, reliable data in the format that suits you best. SKF @ptitude Analyst can incorporate data from other sources, such as OPC servers, and seamlessly interface with your organization’s Computerized Maintenance Management System (CMMS), Enterprise Resource Planning (ERP) or other information management systems.

### Key features

- One software program to manage asset condition data from portable and on-line devices
- Easy for novice or experienced users to learn and use
- Interconnectivity with multiple enterprise-wide software programs and systems
- Scalable and flexible to meet your unique needs
  - Start with one of three base models and expand functionality according to your needs
  - Easy personalization for individual users
  - Application add-ons extend core functionality without migration to other base models
  - User access control to support functional roles and department needs
  - User programmable functions compute your company’s KPIs (Key Performance Indicators)
- Supports Oracle and Microsoft SQL Server database managers
- Compliance reporting and scheduling direct tasks and workforce





## Specifications

### Performance characteristics

Acceleration, velocity, and displacement from hand-held or installed vibration sensors or monitoring systems:	<ul style="list-style-type: none"> <li>• AC / DC sensors</li> <li>• Pressure sensors</li> <li>• Temperature sensors</li> <li>• Keyboard entry: Measurements read from indicators or installed instruments entered in engineering units</li> <li>• Universal tachometer</li> <li>• Visual inspections: Added to measurement as coded notes</li> </ul>
Envelope (demodulator):	With four selectable input filters for enhanced bearing and gear mesh fault detection
gE filter selections:	<ul style="list-style-type: none"> <li>• 5 Hz to 100 Hz</li> <li>• 50 Hz to 1 kHz</li> <li>• 500 Hz to 10 kHz</li> <li>• 5 kHz to 40 kHz</li> </ul>
Input parameters:	<ul style="list-style-type: none"> <li>• Tachometer: TTL / analogue programmable to <math>\pm 25</math> V</li> <li>• RPM range 1 to 99 999</li> <li>• Tachometer power supply output +5 V at 100 mA</li> </ul>
Input over-voltage protection:	<ul style="list-style-type: none"> <li>• AC <math>\pm 50</math> V peak</li> <li>• DC <math>\pm 50</math> V sustained</li> </ul>
Dynamic range:	>90 dB (24 bit ADC sigma-delta)
Input connectors:	<ul style="list-style-type: none"> <li>• CH1: Six pin Fischer CH1, CH2, CH3, CH4 (labeled R) (ICP/AC/DC input), strobe out</li> <li>• CH2: Six pin Fischer CH2 and CH3 (ICP/AC/DC input), +5 V tachometer out</li> <li>• USB HOST/CHR: Seven pin Fischer R (ICP/AC/DC input), USB HOST, audio out</li> <li>• USB DEV/TRIG/PWR: Seven pin Fischer USB DEV, charger, external trigger aux, +5 V tachometer out</li> </ul>
Input signal range:	$\pm 25$ V maximum
Signal:	RMS/Peak/Peak-Peak/True Peak/True Peak-Peak
Transducer check:	Bias Voltage Integrity (O/C and S/C detection)
Auto range:	Yes
Frequency range:	DC to 80 kHz
Bearing condition:	gE
FFT resolution:	100 to 25 600 lines
Time block length:	256 to 65 536 samples
Alarms:	Overall, Spectrum and Exponential (Peak and RMS level)

### Measurement

Range:	<ul style="list-style-type: none"> <li>• Route measurements: DC to 80 kHz</li> <li>• Non-route measurements: DC to 80 kHz</li> </ul>
Averaging:	1 to 255 time averages, 1 to 4 096 spectral averages
Averaging type:	RMS, Time, Peak Hold, Exponential
Cursor:	Fixed and cursor lock. Single, harmonic and peak pick.
Trigger modes:	Free run or external trigger (trigger slope and amplitude)

### Measurement

Resolution:	Programmable 100, 200, 400, 800, 1 600, 3 200, 6 400, 12 800 and 25 600 lines
Measurement windows:	Hanning, flat top, hamming and rectangular
Measurement parameters:	Acceleration, velocity, displacement, gE, temperature, phase, voltage, user specified
Measurement types:	Overall, spectrum, time waveform, cross phase, orbits, shaft centerline
Multi-point automation:	Up to 12 measurements can be listed for one button push automated data collection at each measurement location
Accuracy:	$\pm 2.5\%$ of full scale range
Data display:	<ul style="list-style-type: none"> <li>• Single and dual channel spectrum, single and dual channel time, phase table, process, orbit, cross channel phase</li> <li>• Simultaneous spectrum, time waveform, peak hold averaging</li> <li>• Up to 12 bands (fixed or order base) downloadable from host software</li> </ul>

### Power AX

Battery:	<ul style="list-style-type: none"> <li>• Li-ion 6 600 mAh with integral gas gauging</li> <li>• Eight hours continuous operation minimum</li> </ul>
----------	--

### Physical data

Dedicated keys:	Up, down, right, and left two enter keys for right and left hand operation, four function keys
Hot keys:	Peak find, harmonic, expand
LCD screen:	6.4 in. VGA color transfective TFT LCD screen for indoor and outdoor use, 640 x 480 pixels resolution, 16-bit color
Case:	EN60529, IP 65 (dust- and waterproof)
Weight:	1, 6 kg (3.5 lb.)
Size (height x width x depth):	220 x 220 x 71 mm (8.7 x 8.7 x 2.8 in.)
Drop test:	1.2 m (4 ft.), to MIL STD 810F specifications (with stand retracted)

### Environmental

Certifications:	<ul style="list-style-type: none"> <li>• <b>Special conditions per certifications</b></li> <li>• ATEX: II 3 G Ex ic IIC T4 Gc (Ta = -10 °C to +50 °C)</li> <li>• IECEx: Ex ic IIC T4 Gc (Ta = -10 °C to +50 °C)</li> <li>• CE rated</li> <li>• CSA, Class I, Division 2, Groups A, B, C, D, temperature code T4@Ta = 50 °C</li> </ul>
-----------------	---



IP Rating:	IP 65
Temperature ratings:	<ul style="list-style-type: none"> <li>• Operating temperature: -10 to +50 °C (14 to +122 °F)</li> <li>• Storage temperature: -20 to +60 °C (-4 to +140 °F)</li> </ul>
Humidity:	10 to 90% relative humidity, non-condensing at 0 to +50 °C (32 to +122 °F)
Vibration:	MIL STD 810 transportation

## Specifications

### System, data processing and storage

Operating system:	Microsoft Windows Embedded CE 6.0
Processor:	Marvell PXA320 806 MH
DSP:	Freescale DSP56311
Internal RAM:	<ul style="list-style-type: none"> <li>• 128 MB DDR SDRAM</li> <li>• 128 MB NAND Flash</li> </ul>
Internal storage:	120 MB (capable of storing approximately 4 000 spectra)
SD card:	Can support up to 16 GB
Communication:	<ul style="list-style-type: none"> <li>• USB 1.1 rear panel and docking station)</li> <li>• Microsoft ActiveSync</li> </ul>
User indicator:	Blue, green, amber and red LED's

### Host software

Software: The SKF Microlog AX series connects directly to SKF @ptitude Analyst for SKF Microlog software.  
 The Analysis and Reporting Manager plug-in to SKF @ptitude Analyst provides support for the SKF Microlog application modules.  
 The Analysis and Reporting Manager can also be purchased as a stand alone version for non-route based SKF Microlog Analyzers.



SKF Microlog AX provides fast data collection and analysis. The large screen facilitates viewing in any light.

## Ordering information

### SKF Microlog AX-F model data collector / FFT analyzer

#### The SKF Microlog AX-F [CMXA 80-F-K-SL] standard kit includes:

- CMXA 80-F unit, programmed for four channel non-route measurements, two channel or simultaneous triaxial route analyzer with FFT Analyzer, Balancing, Recorder, Run up Coast down, Frequency Response Function, Spindle Assessment, Sensor Setup, Idler Sound Monitor and Conformance Check modules installed
- Two (2) accelerometers, general purpose, low profile, side exit, industrial, non-NI, with 1/4-28 and M6 mounting studs [CMSS 2200]
- For additional components available for this kit, see "Kit Components"

### SKF Microlog AX-M model data collector / FFT analyzer

#### The SKF Microlog AX-M [CMXA 80-M-K-SL] standard kit includes:

- CMXA 80-M unit, programmed for four channel non-route, two channel or simultaneous triaxial route analyzer with Balancing, FFT Analyzer and sensor setup modules
- Two (2) accelerometers, general purpose, low profile, side exit, industrial, non-NI, with 1/4-28 and M6 mounting studs [CMSS 2200]
- For additional components available for this kit, see "Kit Components"

### SKF Microlog AX-A model data collector / FFT analyzer

#### The SKF Microlog AX-A [CMXA 80-A-K-SL] standard kit includes:

- CMXA 80-A unit, this kit must be purchased with additional modules or application bundles.
- One (1) accelerometer (CMSS 2111) with 2 m integrated cable and magnetic mount (CMSS 908-LD)
- For additional components available for this kit, see "Kit Components"

## Hazardous environments

### ATEX (II 3 G Ex ic IIC T4 Gc) and IECEx (Ex ic IIC T4 Gc) Zone 2 certified kits

#### CMXA 80-F-K-SL-Z2 kit includes:

- CMXA 80-F unit, programmed for four channel non-route measurements, two channel or simultaneous triaxial route analyzer with FFT Analyzer, Balancing, Recorder, Run up Coast down, Frequency Response Function, Spindle Assessment, Sensor Setup, Idler Sound Monitor and Conformance Check modules installed
- Kit components the same as the CMXA 80-F-K-SL standard kit with two (2) accelerometers, ATEX approved, top exit 100 mVg [CMSS 793-EE] replacing the two CMSS 2200 accelerometers

#### CMXA 80-M-K-SL-Z2 kit includes:

- CMXA 80-M unit, programmed for four channel non-route / two channel or simultaneous triaxial route analyzer with FFT Analyzer and Balancing modules
- Kit components the same as the CMXA 80-M-K-SL standard kit with two (2) accelerometers, ATEX approved, top exit 100 mVg [CMSS 793-EE] replacing the two CMSS 2200 accelerometers

### CSA, Class I, Division 2, Groups A, B, C, D certified kits

#### CMXA 80-F-CP-SL kit includes:

- CMXA 80-F unit, programmed for four channel non-route measurements, two channel or simultaneous triaxial route analyzer with FFT Analyzer, Balancing, Recorder, Run up Coast down, Frequency Response Function, Spindle Assessment, Sensor Setup, Idler Sound Monitor and Conformance Check modules installed
- Kit components the same as the CMXA 80-F-K-SL standard kit with two (2) accelerometers, CSA approved, general purpose, industrial [CMSS 793-CA] replacing the two CMSS 2200 accelerometers

#### CMXA 80-M-CP-SL kit includes:

- CMXA 80-M unit, programmed for four channel non-route, two channel or simultaneous triaxial route analyzer with FFT Analyzer and Balancing modules
- Kit components the same as the CMXA 80-M-K-SL standard kit with two (2) accelerometers, CSA approved, general purpose, industrial [CMSS 793-CA] replacing the two CMSS 2200 accelerometers

#### CMXA 80-A-K-SL-Z2 kit includes

- CMXA 80-A unit, must be purchased with at least one other module or application bundle
- Kit components the same as CMXA 80-A-K-SL standard kit with one (1) accelerometer, ATEX approved [CMSS 793-EE], cable [CMAC 5209] and magnetic base [CMSS 980-MD] replacing the CMSS 2111 accelerometer
- For additional components available for this kit, see "Kit Components"

## Kit components (included for all kits except as noted)

- CD-ROM, user manuals, utilities, asset information page and literature
- USB communication / power splitter straight cable, 2 m (6.6 ft.) [CMAC 5095]
- Two (2) accelerometer coiled cables, 1,8 m (6 ft.) [CMAC 5209]<sup>1)</sup>
- Two (2) medium duty magnetic bases, 35 mm (1.5 in.) diameter [CMSS 908-MD]<sup>1)</sup>
- USB/A to B straight cable [CMAC 5082]
- SD slot / dock connector cover [CMAC 5083]
- Docking station [CMAC 5068]
- Battery [CMAC 5070]
- Universal power supply [CMAC 5090]
- Carry case [CMAC 5069]
- Soft case [CMAC 5071]<sup>1, 2)</sup>
- Two (2) hand straps [CMAC 5072]
- Shoulder strap [CMAC 5073]
- Two (2) screen protectors [CMAC 5074]<sup>1, 2)</sup>
- Fischer and audio connector cover set [CMAC 5075]
- 4 GB SD Card [CMAC 5077]

## Field upgrades to SKF Microlog AX series

- Frequency Response Function (FRF) module [CMXA MOD-FRF-SL]
- Run up Coast down module [CMXA MOD-RUCD-SL]
- Data Recorder module [CMXA MOD-REC-SL]
- Conformance Check module [CMXA MOD-CTC-SL]
- Balancing module [CMXA MOD-BAL-SL]
- FFT Analyzer module [CMXA MOD-ANL-SL]
- Spindle Test module, requires Balancing and Run Up Coast down modules and Spindle accessories [CMXA MOD-MTX-SL]
- SKF Idler Sound Monitor module [CMXA MOD-ISM-SL]
- SKF Microlog CMXA 80 AX-M to CMXA 80 AX-F field upgrade [CMXA 80-M/F-SL]
  - Full module upgrade for -M variants
- SKF Microlog CMXA 80 AX-A to CMXA 80 AX-F field upgrade [CMXA 80-A/F-SL]
  - Full module upgrade for -A variants
- SKF Microlog CMXA 80 AX-A Route field upgrade [CMXA 80-A/R-SL]
- SKF Microlog CMXA 80 AX-A to CMXA 80 AX-M field upgrade [CMXA 80-A/M-SL]
  - Route, Balancing and Analyzer module upgrade for -A variants
- Four channel kit description [CMXA A-4CH-SL]
  - Accelerometer kit:
    - Three (3) Accelerometers with integral 2 meter cable and magnetic mounts [CMSS 2111]
    - Two (2) splitter cables [CMAC 5079] to allow 4 channels

<sup>1)</sup> Not included in the SKF Microlog AX-A kit.

<sup>2)</sup> Not included in ATEX kit.

### SKF Microlog AX series application bundles

- SKF Microlog Conformance Test kit [CMXA CTC-K-SL]
  - Conformance Check module
  - ISO test standard templates
  - Analysis Reporting Manager [CMSW 7311-SL]
- SKF Microlog FFT Analyzer and Bump Test kit [CMXA ANL-K-SL]
  - FFT Analyzer module
  - Accelerometer kit (accelerometer with integral 2 m cable and magnetic mount)
- SKF Microlog Balancing kit [CMXA BAL-K-SL]
  - Balancing and FFT Analyzer modules
  - Accelerometer, small footprint with integrated cable [CMSS 2111]
  - Laser tachometer kit [CMAC 5030-K]
  - Gooseneck clamp with magnetic base [CMSS 6156]
  - Analysis Reporting Manager [CMSW 7311-SL]
- SKF Microlog Spindle Assessment kit [CMXA MTX-K-SL]
  - Spindle Test, Balancing and Run up Coast down modules
  - Laser tachometer kit [CMAC 5030-K]
  - Gooseneck clamp with magnetic base [CMSS 6156]
  - Run out gauge
  - Belt tension checker [CMAC 5139 and CMAC 5140]
  - Spindle test quick start guide
- SKF Microlog Idler Sound Monitor Kit [CMXA ISM-K-SL]
  - SKF Idler Sound Monitor and FFT Analyzer modules
  - Microphone [CMAC 5091]
  - Cable [CMAC 5093]
  - Parabola [CMAC 5141 and CMAC 5142]
  - Wind baffle [CMAC 5143]
  - Headphone cable [CMAC 5078]
  - Headphone set [CMAC 5403]

### Optional accessories

A number of accessories are available to complement the SKF Microlog AX. For technical details or information on any item, please contact your local SKF sales representative. Specifications and photographs of the SKF Microlog series accessories are available in the SKF Microlog Analyzer accessories catalog (*SKF publication CM/P1 11643 EN*).

#### Hardware

- Triax accelerometer kit [CMAC 4370-K]
- Laser tachometer kit [CMAC 5030-K]
- Laser tachometer kit with ATEX certified tachometer [CMAC 5030-K-Z2]
- Modal hammer kit for use on structures with a mass of 210 g (7.6 oz.) and above [CMAC 5056]
- Modal hammer kit for use on structures with a mass of 56 g (2.0 oz.) and above [CMAC 5057]
- Modal hammer kit without accelerometers [CMAC 5058]
- ICP Microphone with integral preamplifier kit [CMAC 5084]
- AC / DC current clamp [CMAC 5208]
- SKF Microlog Analyzer field balancing accessory kit (with optical sensor) [CMCP 850-01]
- SKF Microlog Analyzer field balancing accessory kit (with laser sensor) [CMCP 850-02]
- SKF Microlog Analyzer field balancing accessory kit (with laser tachometer) [CMCP 850-03]
- Optical phase reference kit [CMSS 6155XK-U-CE]
- Optical phase reference magnetic holder [CMAC 6156]
- Strobe light [CMSS 6165K-AX]
- Smart laser sensor tachometer kit [CMSS 6195AX-K]
- SKF Idler Sound Monitor accessory kit [CMAC 5411]

#### Battery and power supply

- Universal power supply [CMAC 5090]
- Battery [CMAC 5070]
- Battery for use in ATEX units [CMAC 5092]

#### Accelerometers

- Accelerometer, general purpose, low profile, side exit, industrial, non-NI, with 1/4-28 and M6 mounting studs [CMSS 2200]
- Accelerometer, general purpose, low profile, side exit, industrial, non-NI, with M8 mounting stud [CMSS 2200-M8]
- Accelerometer, ATEX approved, IS GPII ICP (100 mVg), general purpose, industrial [CMSS 793-EE]
- Accelerometer, CSA approved, general purpose, industrial [CMSS 793-CA]
- Accelerometer, small footprint with integrated cable [CMSS 2111]
- Accelerometer, intrinsically safe (IS) [CMSS 2222]
- High frequency accelerometer kit [CMSS 2114-K]
- Medium duty magnetic base, 35 mm (1.5 in.) diameter [CMSS 908-MD]

## Cables

### Accelerometer cables

- Triaxial accelerometer coiled cable [CMAC 5009]
  - for use with triax accelerometer kit CMAC 4370-K
- Splitter, four channel, two (2) required [CMAC 5079]
- Accelerometer coiled cable, 1,8 m (6 ft.) [CMAC 5209]
- Accelerometer coiled cable with safety breakaway, 1,8 m (6 ft.) [CMAC 5209-06S]
- Accelerometer coiled cable, 3 m (10 ft.) [CMAC 5209-10]

### Tachometer cables

- BNC tachometer straight cable, 1 m (3.3 ft.) [CMAC 5211]
- Laser tachometer kit, straight cable, 24 cm (9.5 in.) [CMAC 5213]
  - for laser tachometer kit CMAC 5030-K (sold with kit only)
- Laser tachometer kit, straight cable, 2 m (6.6 ft.) [CMAC 5214]
  - for laser tachometer kit CMAC 5030-K (sold individually)

### Extension cables

- CHX signal input straight extension cable, 5 m (16.4 ft.) [CMAC 5036]
- CHX signal input straight extension cable, 10 m (32.8 ft.) [CMAC 5037]
- Tachometer straight extension cable, 5 m (16.4 ft.) [CMAC 5043]
  - for use with laser tachometer kit CMAC 5030-K
- Tachometer straight extension cable, 10 m (32.8 ft.) [CMAC 5044]
  - for use with laser tachometer kit CMAC 5030-K

### Miscellaneous cables

- Cable converter, two pin MIL to BNC [CMAC 3715]
- USB communication / power splitter straight cable, 2 m (6.6 ft.) [CMAC 5019]
- Fischer to BNC signal input straight cable, lightweight for hammer kits, 1 m (3.3 ft.) [CMAC 5023]
- Fischer to BNC signal input cable [CMAC 5088]
- Audio headphone straight cable [CMAC 5078]
- USB / A to B straight cable [CMAC 5082]
- Input to strobe light cable [CMAC 5404]
- Output from strobe light cable [CMAC 5406]

### Miscellaneous accessories

- Docking station [CMAC 5068]
- Carry case [CMAC 5069]
- Soft case [CMAC 5071]
- Hand strap [CMAC 5072]
- Shoulder strap [CMAC 5073]
- Screen protector [CMAC 5074]
- Fischer and audio connector cover set [CMAC 5075]
- Audio headset, hard hat compatible [CMAC 5403]
- 4 GB SD card [CMAC 5077]





# SKF Microlog Analyzer GX series

## CMXA 75

### Portable data collector / FFT analyzer

The SKF Microlog GX series are high performance, one to four channel, route-based portable data collector / FFT analyzers that provide unmatched versatility and functionality in a rugged, industrial design. Developed for use in a wide range of industries, the SKF Microlog GX series is approved for use in hazardous environments requiring ATEX, IECEx and Class I Division 2 certifications.

### Key features

- Marvell 806 MHz PXA320 processor for exceptionally fast operation
- Bright 1/4 VGA color display that enhances visibility in all environments – dark or bright
- Rugged design
  - Two meter multiple drop
  - IP 65 rated
- Outstanding data storage capacity with 128 MB flash memory for internal storage and Secure Digital (SD) memory expansion slot
- Multi-language support – 15 language options
- Choose between instruments that have single channel input, or four channels plus simultaneous triaxial input
- Multi-plane balancing application
- Intuitive graphical user interface
- Long-life battery for up to eight hours of operation
- Wide range of accessories to expand functionality even further
- Field upgradeable from an entry level instrument to an advanced analyzer

### State-of-the-art technology

With a robust, high-speed data processor, the SKF Microlog GX series captures full feature route and non-route dynamic (vibration) and static (process) measurements from many sources. Fixed mode autoranging automatically selects an input range based on the sensor type and sensitivity. Three channel simultaneous triaxial input with the separate tachometer input enables faster, more comprehensive data collection without adding to collection time. The SKF Microlog GX series also includes a triggering functionality that enables the unit to examine the trigger signal first, and then automatically set the trigger level. For even faster data collection, users can configure up to 12 measurements for automatic, one button data collection at a measurement location.



### Modular approach offers seamless expansion

The modular design of the SKF Microlog GX series offers customers the option to upgrade and expand functionality without having to buy another instrument. Accessories are inter-changeable between models. The SKF Microlog GX is shipped with the full SKF Microlog suite of modules installed. To add additional functionality, units can be upgraded to more advanced models, simply purchase the module and enter the supplied license key.

For companies who are interested in an entry-level route-based data collector, the SKF Microlog GX-R model offers ease of use and implementation with multi-route, single channel data collection. This model features a measurement range of 80 kHz  $F_{max}$  and up to 25 600 FFT lines of resolution.

The SKF Microlog GX-M includes multiple routes, and non-route data collection, four channel FFT analysis, three channel simultaneous triax and the Balancing module.

Additional features are added to create the SKF Microlog GX-F model, which includes all modules. The SKF Microlog GX-M can also be upgraded to any of the other modules including Run up Coast down module that is used to record and analyze data from machines where noise or vibration levels are changing with speed or time, and the Frequency Response Function (FRF) module, which uses a modal hammer to establish the properties of mechanical structures.

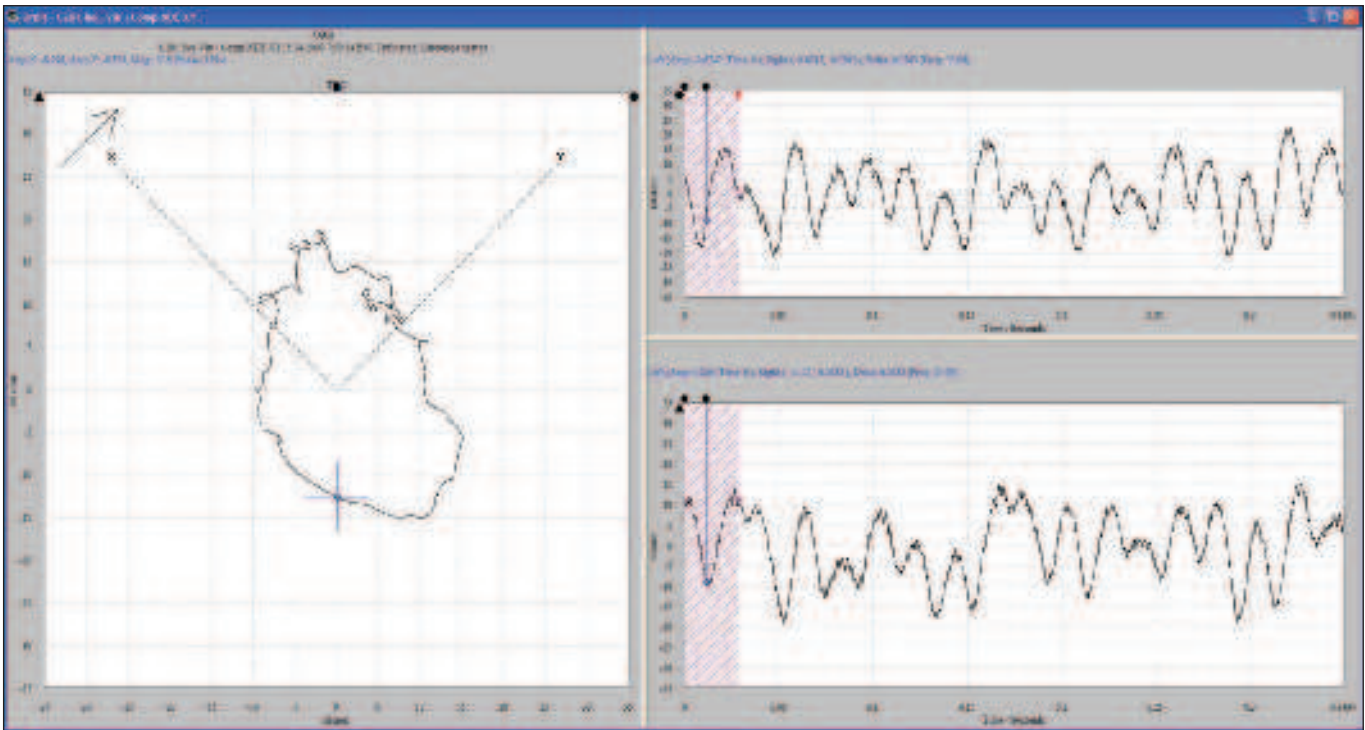
## SKF @ptitude Monitoring Suite

### Asset data available fast, enterprise wide and in the formats you want

The route based SKF Microlog GX series transfers data to SKF @ptitude Analyst software, a comprehensive software solution with powerful diagnostic and analytical capabilities. SKF @ptitude Analyst provides fast, efficient and reliable storage, analysis, and retrieval of complex asset information and makes the information accessible throughout your entire organization. With this powerful analysis tool, you are in complete control – from the way you set up hierarchies, filtered workspaces, routes, and analysis parameters, to the customized format for reporting. You can collect information based on location, machine type, frequency, or other selections. SKF @ptitude Analyst allows you to determine the appropriate limits for alarm conditions and how alarms are categorized. You receive consistent, reliable data in the format that suits you best. SKF @ptitude Analyst can incorporate data from other sources, such as OPC servers, and seamlessly interface with your organization's Computerized Maintenance Management System (CMMS), Enterprise Resource Planning (ERP) or other information management systems.

### Key features

- One software program to manage asset condition data from portable and on-line devices
- Easy for novice or experienced users to learn and use
- Interconnectivity with multiple enterprise-wide software programs and systems
- Scalable and flexible to meet your unique needs
  - Start with one of three base models and expand functionality according to your needs
  - Easy personalization for individual users
  - Application add-ons extend core functionality without migration to other base models
  - User access control to support functional roles and department needs
  - User programmable functions compute your company's KPIs (Key Performance Indicators)
- Supports Oracle and Microsoft SQL Server database managers
- Compliance reporting and scheduling help direct tasks and workforce



## Specifications

### Performance characteristics

Acceleration, velocity, and displacement from hand-held or installed vibration sensors or monitoring systems:	<ul style="list-style-type: none"> <li>• AC / DC sensors</li> <li>• Pressure sensors</li> <li>• Temperature sensors</li> <li>• Keyboard entry: Measurements read from indicators or installed instruments entered in engineering units</li> <li>• Universal tachometer</li> <li>• Visual inspections: Added to measurement as coded notes</li> </ul>
Envelope (demodulator):	With four selectable input filters for enhanced bearing and gear mesh fault detection
gE filter selections:	<ul style="list-style-type: none"> <li>• 5 Hz to 100 Hz</li> <li>• 50 Hz to 1 kHz</li> <li>• 500 Hz to 10 kHz</li> <li>• 5 kHz to 40 kHz</li> </ul>
Input parameters:	<ul style="list-style-type: none"> <li>• Tachometer: TTL / analogue programmable to <math>\pm 25</math> V</li> <li>• RPM range 1 to 99 999</li> <li>• Tachometer power supply output +5 V at 100 mA</li> </ul>
Input over-voltage protection:	<ul style="list-style-type: none"> <li>• AC <math>\pm 50</math> V peak</li> <li>• DC <math>\pm 50</math> V sustained</li> </ul>
Dynamic range:	>90 dB (24 bit ADC sigma-delta)
Input connectors:	<ul style="list-style-type: none"> <li>• CH1: Six pin Fischer, CH1, CH2, CH3, CH4</li> <li>• CH2: Six pin Fischer, CH2, CH3, CH4</li> <li>• USB host / CHR / headphone: USB keyboard, CHR, headphones</li> <li>• USB Device / power / trigger: Seven pin Fischer trigger in, trigger tachometer power supply, USB COMMS, charger</li> </ul>
Input signal range:	$\pm 25$ V maximum
Signal:	RMS/Peak/Peak-Peak/True Peak/True Peak-Peak
Transducer check:	Bias Voltage Integrity (O/C and S/C detection)
Auto range:	Yes
Frequency range:	DC to 80 kHz
Bearing condition:	gE
FFT resolution:	100 to 25 600 lines
Time block length:	256 to 65 536 samples
Alarms:	Overall, Spectrum and Exponential (Peak and RMS level)

### Measurement

Range:	<ul style="list-style-type: none"> <li>• Route measurements: DC to 80 kHz (GX-R: 80 kHz)</li> <li>• Non-route measurements: DC to 80 kHz (not available in GX-R)</li> </ul>
Averaging:	1 to 255 time averages, 1 to 4 096 spectral averages
Averaging type:	RMS, Time, Peak Hold, Exponential
Cursor:	Fixed and cursor lock. Single, harmonic and peak pick.
Trigger modes:	Free run or external trigger (trigger slope and amplitude)

### Measurement

Resolution:	Programmable 100, 200, 400, 800, 1 600, 3 200, 6 400, 12 800 and 25 600 lines
Measurement windows:	Hanning, flat top, hamming and rectangular
Measurement parameters:	Acceleration, velocity, displacement, gE, temperature, phase, voltage, user specified
Measurement types:	Overall, spectrum, time waveform, cross phase, orbits, shaft centerline
Multi-point automation:	Up to 12 measurements can be listed for one button push automated data collection at each measurement location
Accuracy:	$\pm 2.5\%$ of full scale range
Data display:	<ul style="list-style-type: none"> <li>• Single and dual channel spectrum, single and dual channel time, phase table, process, orbit, cross channel phase (GX-R: single-channel spectrum, time, phase table, and process)</li> <li>• Simultaneous spectrum, time waveform, peak hold averaging</li> <li>• Up to 12 bands (fixed or order base) downloadable from host software</li> </ul>

### Power

Battery:	<ul style="list-style-type: none"> <li>• Li-ion smart battery pack</li> <li>• Eight hours continuous operation minimum</li> </ul>
----------	---

### Physical data

Dedicated keys:	Up, down, right, and left two enter keys for right and left hand operation, four function keys
Hot keys:	Peak find, harmonic, expand
LCD screen:	1/4 VGA color TFT screen, 320 x 240 pixels resolution
Case:	High impact ABS with IP 65 dust and splash rating
Weight:	715 g (1.6 lb.)
Size (height x width):	<ul style="list-style-type: none"> <li>• Narrowest point: 186 x 93 mm (7.4 x 3.7 in.)</li> <li>• Widest point: 186 x 134 mm (7.4 x 5.4 in.)</li> </ul>
Drop test:	2 m (6.6 ft.), to MIL STD 810F specifications

### Environmental

Certifications:	<ul style="list-style-type: none"> <li>• <b>Special conditions per certifications</b></li> <li>• ATEX: II 3 G Ex ic IIC T4 Gc (Ta = -10 °C to +50 °C)</li> <li>• IECEx: Ex ic IIC T4 Gc (Ta = -10 °C to +50 °C)</li> <li>• CE rated</li> <li>• CSA, Class I, Division 2, Groups A, B, C, D, temperature code T4@Ta = 50 °C</li> </ul>
IP Rating:	IP 65
Temperature ratings:	<ul style="list-style-type: none"> <li>• Operating temperature: -10 to +50 °C (14 to +122 °F)</li> <li>• Storage temperature: -20 to +60 °C (-4 to +140 °F)</li> </ul>
Humidity:	95% non-condensing
Vibration:	MIL STD 810 transportation



## Specifications

### System, data processing and storage

Operating system:	Microsoft Windows Embedded CE 6.0
Processor:	Marvell PXA320 806 MH
DSP:	Freescale DSP56311
Internal RAM:	<ul style="list-style-type: none"> <li>• 128 MB DDR SDRAM</li> <li>• 128 MB NAND Flash</li> </ul>
Internal storage:	120 MB (capable of storing approximately 4 000 spectra)
SD card:	Can support up to 16 GB
Communication:	USB
User indicator:	Blue, green, amber and red LED's

### Host software

Software: The SKF Microlog GX series connects directly to SKF @ptitude Analyst for SKF Microlog software.  
 The Analysis and Reporting Manager plug-in to SKF @ptitude Analyst provides support for the SKF Microlog application modules.  
 The Analysis and Reporting Manager can also be purchased as a stand alone version for non-route based SKF Microlog Analyzers.

## Ordering information

### SKF Microlog GX-F data collector / FFT analyzer

#### The SKF Microlog GX-F [CMXA 75-F-K-SL] standard kit includes:

- CMXA 75-F unit, programmed for four channel non-route measurements, two channel or simultaneous triaxial route analyzer with FFT Analyzer, Balancing, Recorder, Run up Coast down, Frequency Response Function, Conformance Check, Spindle Assessment, sensor setup and Idler Sound Monitor modules installed
- Two (2) accelerometers, general purpose, low profile, side exit, industrial, non-NI, with 1/4-28 and M6 mounting studs [CMSS 2200]
- Two (2) accelerometer coiled cables, 1,8 m (6 ft.) [CMAC 5209]
- Two (2) medium duty magnetic bases, 35 mm (1.5 in.) diameter [CMSS 908-MD]
- For additional components available for this kit, see "Kit Components"

### SKF Microlog GX-M data collector / FFT analyzer

#### The SKF Microlog GX-M [CMXA 75-M-K-SL] standard kit includes:

- CMXA 75-M unit, programmed for four channel non-route, two channel or simultaneous triaxial route analyzer with Balancing, FFT Analyzer and sensor setup modules
- Two (2) accelerometers, general purpose, low profile, side exit, industrial, non-NI, with 1/4-28 and M6 mounting studs [CMSS 2200]
- Two (2) accelerometer coiled cables, 1,8 m (6 ft.) [CMAC 5209]
- Two (2) medium duty magnetic bases, 35 mm (1.5 in.) diameter [CMSS 908-MD]
- For additional components available for this kit, see "Kit Components"

### SKF Microlog GX-A data collector / FFT analyzer

#### The SKF Microlog GX-A [CMXA 75-A-K-SL] standard kit includes:

- CMXA 75-A unit, this kit must be purchased with additional modules or application bundles
- One (1) accelerometer [CMSS 2111] with 2 m integrated cable and magnetic mount [CMSS 908-LD]
- For additional components available for this kit, see "Kit Components"



## SKF Microlog GX-R data collector / FFT analyzer

### The SKF Microlog GX-R [CMXA 75-R-K-SL] standard kit includes:

- CMXA 75-R unit, programmed for route based single channel analyzer with sensor setup module (does not include non-route or the Balancing module)
- One (1) accelerometer, general purpose, low profile, side exit, industrial, non-NI, with 1/4-28 and M6 mounting studs [CMSS 2200]
- One (1) accelerometer coiled cable, 1,8 m (6 ft.) [CMAC 5209]
- One (1) medium duty magnetic base, 35 mm (1.5 in.) diameter [CMSS 908-MD]
- For additional components available for this kit, see "Kit Components"

### Hazardous environments

#### ATEX (II 3 G Ex ic IIC T4 Gc) and IECEx (Ex ic IIC T4 Gc) Zone 2 certified kits

##### CMXA 75-F-K-SL-Z2 kit includes:

- CMXA 75-F unit, programmed for four channel non-route measurements, two channel or simultaneous triaxial route analyzer with FFT Analyzer, Balancing, Recorder, Run up Coast down, Frequency Response Function, Conformance Check, Spindle Assessment, sensor setup and Idler Sound Monitor modules installed
- Shoulder strap for ATEX units [CMAC 5113]
- Kit components the same as the CMXA 75-F-K-SL standard kit with two (2) accelerometers, ATEX approved, top exit 100 mVg [CMSS 793-EE] replacing the two CMSS 2200 accelerometers

##### CMXA 75-M-K-SL-Z2 kit includes:

- CMXA 75-M unit, programmed for four channel non-route, two channel or simultaneous triaxial route analyzer with Balancing, FFT Analyzer and sensor setup modules
- Shoulder strap for ATEX units [CMAC 5113]
- Kit components the same as the CMXA 75-M-K-SL standard kit with two (2) accelerometers, ATEX approved, top exit 100 mVg [CMSS 793-EE] replacing the two CMSS 2200 accelerometers

##### CMXA 75-R-K-SL-Z2 kit includes:

- CMXA 75-R unit, programmed for route based single channel analyzer with sensor setup module (does not include Analyzer or the Balancing module)
- Shoulder strap for ATEX units [CMAC 5113]
- Kit components the same as the CMXA 75-R-K-SL standard kit with one (1) accelerometer, ATEX approved, top exit 100 mVg [CMSS 793-EE] replacing the one CMSS 2200 accelerometers

### Hazardous environments (continued)

#### CSA (Class I, Division 2, Groups A, B, C, D) certified kits

##### CMXA 75-F-K-CP-SL kit includes:

- CMXA 75-F unit, programmed for four channel non-route measurements, two channel or simultaneous triaxial route analyzer with FFT Analyzer, Balancing, Recorder, Run up Coast down, Frequency Response Function, Conformance Check, Spindle Assessment, sensor setup and Idler Sound Monitor modules installed
- Kit components the same as the CMXA 75-F-K-SL standard kit with two (2) accelerometers, CSA approved, general purpose, industrial [CMSS 793-CA] replacing the two CMSS 2200 accelerometers

##### CMXA 75-M-CP-SL kit includes:

- CMXA 75-M unit, programmed for four channel non-route, two channel or simultaneous triaxial route analyzer with Balancing, FFT Analyzer and sensor setup modules
- Kit components the same as the CMXA 75-M-K-SL standard kit with two (2) accelerometers, CSA approved, general purpose, industrial [CMSS 793-CA] replacing the two CMSS 2200 accelerometers

##### CMXA 75-R-CP-SL kit includes:

- CMXA 75-R unit, programmed for route based single channel analyzer with sensor setup module (does not include Analyzer or the Balancing module)
- Kit components the same as the CMXA 75-F-K-SL standard kit with two (2) accelerometers, CSA approved, general purpose, industrial [CMSS 793-CA] replacing the one CMSS 2200 accelerometer

##### CMXA 75-A-K-SL-Z2 kit includes:

- CMXA 75-A unit, this kit must be purchased with additional modules or application bundles
- Kit components the same as CMXA 75-A-K-SL standard kit with one (1) accelerometer, ATEX approved [CMSS 793-EE], cable [CMAC 5209] and magnetic base [CMSS 980-MD] replacing the CMSS 2111 accelerometer
- For additional components available for this kit, see "Kit Components"

### Kit components (included for all kits)

- CD-ROM, user manuals, utilities, asset information page, and literature
- USB communication / power splitter straight cable, 2 m (6.6 ft.) [CMAC 5095]
- Battery pack [CMAC 5031]
- Universal power supply [CMAC 5090]
- Rubber bump sleeve [CMAC 5015]
- Hard shell carrying case [CMAC 5029]
- Hand strap [CMAC 5020]
- Shoulder strap [CMAC 5010]
- Shoulder strap for ATEX units [CMAC 5113]
- Two (2) screen protectors <sup>1, 2)</sup>
- Connector cover set with lanyards
- 4 GB SD card [CMAC 5077]

### Field upgrades to SKF Microlog GX series

- GX-M series to GX-F series field upgrade [CMXA 75-GXM/F-SL]
- GX-R series to GX-M series field upgrade kit [CMXA 75-GXR/M-SL] includes:
  - One (1) accelerometer, low profile [CMSS 2200]
  - One (1) cable, sensor, coiled [CMAC 5209]
  - One (1) magnetic base accelerometer, medium duty, 3,81 cm (1.5 in.) diameter [CMSS 908-MD]
- Frequency Response Function (FRF) module [CMXA MOD-FRF-SL]
- Run up Coast down module [CMXA MOD-RUCD-SL]
- Data Recorder module [CMXA MOD-REC-SL]
- Conformance Check module [CMXA MOD-CTC-SL]
- Balancing module [CMXA MOD-BAL-SL]
- FFT Analyzer module [CMXA MOD-ANL-SL]
- Spindle Test module [CMXA MOD-MTX-SL], requires Balancing and Run Up Coast down modules and Spindle accessories
- SKF Idler Sound Monitor module [CMXA MOD-ISM-SL]
- SKF Microlog CMXA 75 GX-M to CMXA 75 GX-F field upgrade [CMXA 75-M/F-SL]
- SKF Microlog CMXA 75 GX-A Route field upgrade [CMXA 75-A/R-SL]
- SKF Microlog CMXA 75 GX-A to CMXA 75 GX-F field upgrade [CMXA 75-A/F-SL]
  - Full module upgrade for -A variants
- SKF Microlog CMXA 75 GX-A to CMXA 75 GX-M field upgrade [CMXA 75-A/M-SL]
  - Route, Balancing and Analyzer module upgrade for -A variants
- Four channel kit description [CMXA A-4CH-SL]
  - Accelerometer kit:
    - Three (3) Accelerometers with integral 2 meter cable and magnetic mounts [CMSS 2111]
    - Two (2) splitter cables [CMAC 5079] to allow 4 channels

### SKF Microlog GX series application bundles

- SKF Microlog Conformance Test kit [CMXA CTC-K-SL]
  - Conformance Check module
  - ISO test standard templates
  - Analysis Reporting Manager [CMSW 7311-SL]
- SKF Microlog FFT Analyzer and Bump Test kit [CMXA ANL-K-SL]
  - FFT Analyzer module
  - Accelerometer kit (accelerometer with integral 2 m cable and magnetic mount)
- SKF Microlog Balancing kit [CMXA BAL-K-SL]
  - Balancing and FFT Analyzer modules
  - Accelerometer, small footprint with integrated cable [CMSS 2111]
  - Laser tachometer set [CMAC 5030-K]
  - Gooseneck clamp with magnetic base [CMSS 6156]
  - Analysis Reporting Manager [CMSW 7311-SL]
- SKF Microlog Spindle Assessment kit [CMXA MTX-K-SL]
  - Spindle Test, Balancing and Run up Coast down modules
  - Laser tachometer kit [CMAC 5030-K]
  - Gooseneck clamp with magnetic base [CMSS 6156]
  - Run out gauge
  - Belt tension checker [CMAC 5139 and CMAC 5140]
  - Spindle test quick start guide
- SKF Microlog Idler Sound Monitor Kit [CMXA ISM-K-SL]
  - SKF Idler Sound Monitor and FFT Analyzer modules
  - Microphone [CMAC 5091]
  - Cable [CMAC 5093]
  - Parabola [CMAC 5141 and CMAC 5142]
  - Wind baffle [CMAC 5143]
  - Headphone cable [CMAC 5078]
  - Headphone set [CMAC 5403]

<sup>1)</sup> Not included in the SKF Microlog GX-A kit.

<sup>2)</sup> Not included in ATEX kit.

## Optional accessories

A number of accessories are available to complement the SKF Microlog GX Series. For technical details or information on any item, please contact your local SKF sales representative. Specifications and photographs of the SKF Microlog series accessories are available in the SKF Microlog Accessories catalog (*SKF publication CM/P1 11643 EN*).

### Hardware

- Triax accelerometer kit [CMAC 4370-K]
- Laser tachometer kit [CMAC 5030-K]
- Laser tachometer kit with ATEX certified tachometer [CMAC 5030-K-Z2]
- Modal hammer kit for use on structures with a mass of 210 g (7.6 oz.) and above [CMAC 5056]
- Modal hammer kit for use on structures with a mass of 56 g (2.0 oz.) and above [CMAC 5057]
- Modal hammer kit without accelerometers [CMAC 5058]
- ICP Microphone with integral preamplifier kit [CMAC 5084]
- AC / DC current clamp [CMAC 5208]
- SKF Microlog Analyzer field balancing accessory kit (with optical sensor) [CMCP 850-01]
- SKF Microlog Analyzer field balancing accessory kit (with laser sensor) [CMCP 850-02]
- SKF Microlog Analyzer field balancing accessory kit (with laser tachometer) [CMCP 850-03]
- Optical phase reference kit [CMSS 6155XK-U-CE]
- Optical phase reference magnetic holder [CMAC 6156]
- Strobe light [CMSS 6165K-AX]
- Smart laser sensor tachometer kit [CMSS 6195AX-K]
- SKF Idler Sound Monitor accessory kit [CMAC 5410]

### Battery and power supply

- Universal power supply [CMAC 5090]
- Battery [CMAC 5031]

### Accelerometers

- Accelerometer, general purpose, low profile, side exit, industrial, non-NI, with 1/4-28 and M6 mounting studs [CMSS 2200]
- Accelerometer, general purpose, low profile, side exit, industrial, non-NI, with M8 mounting stud [CMSS 2200-M8]
- Accelerometer, ATEX approved, IS GPII ICP (100 mVg), general purpose, industrial [CMSS 793-EE]
- Accelerometer, CSA approved, general purpose, industrial [CMSS 793-CA]
- Accelerometer, small footprint with integrated cable [CMSS 2111]
- Accelerometer, intrinsically safe (IS) [CMSS 2222]
- Accelerometer, small diameter [CMSS 732A]
- Medium duty magnetic base, 35 mm (1.5 in.) diameter [CMSS 908-MD]

## Cables

### Accelerometer cables

- Triaxial accelerometer coiled cable [CMAC 5009]
  - for use with triax accelerometer kit CMAC 4370-K
- High frequency accelerometer cable [CMAC 5061]
  - for use with CMSS 732A accelerometer
- Accelerometer coiled cable, 1,8 m (6 ft.) [CMAC 5209]
- Accelerometer coiled cable with safety breakaway, 1,8 m (6 ft.) [CMAC 5209-06S]
- Accelerometer coiled cable, 3 m (10 ft.) [CMAC 5209-10]

### Tachometer cables

- BNC tachometer straight cable, 1 m (3.3 ft.) [CMAC 5211]
- Laser tachometer kit, straight cable, 24 cm (9.5 in.) [CMAC 5213]
  - for laser tachometer kit CMAC 5030-K (sold with kit only)
- Laser tachometer kit, straight cable, 2 m (6.6 ft.) [CMAC 5214]
  - for laser tachometer kit CMAC 5030-K (sold individually)

### Extension cables

- CHX signal input straight extension cable, 5 m (16.4 ft.) [CMAC 5036]
- CHX signal input straight extension cable, 10 m (32.8 ft.) [CMAC 5037]
- Tachometer straight extension cable, 5 m (16.4 ft.) [CMAC 5043]
  - for use with laser tachometer kit CMAC 5030-K
- Tachometer straight extension cable, 10 m (32.8 ft.) [CMAC 5044]
  - for use with laser tachometer kit CMAC 5030-K

### Miscellaneous cables

- Cable converter, two pin MIL to BNC [CMAC 3715]
- USB communication / power splitter straight cable, 2 m (6.6 ft.) [CMAC 5019]
- Fischer to BNC signal input straight cable, lightweight for hammer kits, 1 m (3.3 ft.) [CMAC 5023]
- Fischer to BNC signal input cable [CMAC 5088]
- Power / trigger splitter straight cable, 30 cm (11.8 in.) [CMAC 5032]
- Audio headphone straight cable [CMAC 5078]
- Input to strobe light cable [CMAC 5404]
- Output from strobe light cable [CMAC 5406]

### Miscellaneous accessories

- Shoulder strap [CMAC 5010]
- Shoulder strap for ATEX units [CMAC 5113]
- Rubber boot [CMAC 5015]
- Hand strap [CMAC 5020]
- Carrying case [CMAC 5026]
- Hard shell carrying case [CMAC 5029]
- Fischer and audio connector cover set [CMAC 5075]
- Shoulder strap, leather, hazardous areas [CMAC 5113]
- Audio headset, hard hat compatible [CMAC 5403]
- Screen protector (5 pieces) kit [CMAC 6139]
- 4 GB SD card [CMAC 5077]



# SKF Microlog Analyzer

## CMXA 51-IS

ATEX and IECEx certified – intrinsically safe portable data collector / FFT analyzer

### Collects data in hazardous locations

Operations and maintenance personnel faced with hazardous environments in their plant locations must use specific data collection instruments with an “intrinsically safe” (IS) designation.

The SKF Microlog Analyzer CMXA 51-IS, an intrinsically safe, rugged and portable, hand-held instrument, allows for the collection of vibration, process, and dynamic data in hazardous environments. Such industries include petrochemical, water treatment and pharmaceutical, as well as others where IS regulations apply.

The SKF Microlog Analyzer CMXA 51-IS has achieved the Intrinsic Safety rating from the European regulatory agency, SIRI, and is rated Group I (Mining) and Group II (Petrochemical).

- ATEX and IECEx



- Ga Ex ia IIC T4 (Ta -20 to +50 °C)
- Ma Ex ia I (Ta 0 to +50 °C)
- Complete system includes ATEX approved sensor

### Features

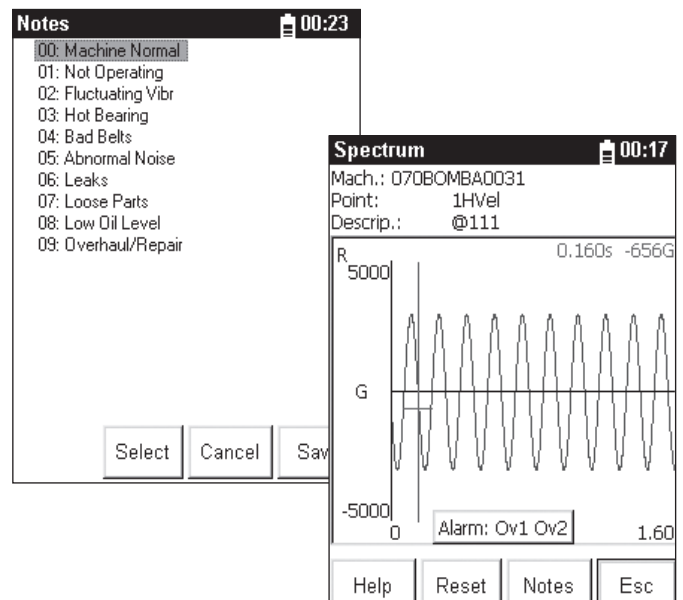
- 1/4 VGA (240 x 320) backlit monochrome touch screen LCD
- Intuitive user interface with left or right hand operation and context sensitive “Help” function
- Four cursor keys, and numeric keypad for easy screen navigation and user input
- Acceleration Enveloping (gE), SKF technology for bearing assessment
- Red, amber, green LED indicators
- One data acquisition and one phase channel for compatibility with ICP accelerometers, velocity transducers, displacement probes, infrared temperature sensors, photo-optical pick-ups, DC inputs and manual entry
- WindowsCE operating system



### Integration with SKF @ptitude Monitoring Suite

The SKF Microlog Analyzer CMXA 51-IS integrates with SKF @ptitude Monitoring Suite, a comprehensive software solution with powerful diagnostic and analytical capabilities.

For additional information on the SKF Microlog Analyzer CMXA 51-IS, contact your local SKF sales representative or visit our web site at [www.skf.com/cm/microlog](http://www.skf.com/cm/microlog).





## Specifications

### Input sources

Input signal types:	ICP accelerometers, velocity transducers, displacement probes, infrared temperature sensors, AC/DC inputs, acceleration, photo optical pick-ups, manual entry
Signal input:	ICP (20 V at 3,5 mA), AC signal, DC signal, tachometer (trigger input – photo optical, etc.) power input – battery charge

### Input parameters

Input signal range:	<ul style="list-style-type: none"> <li>• ICP: 0 to 20 V</li> <li>• Non ICP: <math>\pm 12</math> V, or 0 to 24 V for displacement</li> </ul>
Signal:	RMS / peak / peak-to-peak / true peak / true peak-to-peak
Transducer check:	Bias voltage integrity (ICP)
Auto range:	Yes
Dynamic range:	>85 dB (20 bit ADC sigma-delta)
Amplitude accuracy:	5%
Input connectors:	<ul style="list-style-type: none"> <li>• Signal: Four pin Fischer, 102 type</li> <li>• Power in / battery charge: Two pin Fischer, 102 type</li> <li>• Trigger: Three pin Fischer, 102 type</li> </ul>

### Measurement processing

Measurement parameters:	Acceleration, velocity, displacement, gE, temperature, phase, voltage, user specified
Measurement types:	Overall, spectrum, time waveform, phase, order normalized
Range (route and non route):	3 to 40 Hz
Frequency range:	DC to 40 kHz maximum
Integrated measurements:	5% Accurate >10 Hz
Filters – high pass:	2 and 200 Hz hardware filter, second order
Bearing condition:	gE, dHFD
gE Filters:	<ul style="list-style-type: none"> <li>• 5 Hz to 100 Hz</li> <li>• 50 Hz to 1 000 Hz</li> <li>• 500 Hz to 10 kHz</li> <li>• 5 kHz to 40 kHz</li> </ul>
FFT resolution:	100 to 6 400 lines (route), 100 to 12 800 (non-route)
Averaging:	Time, spectral, peak hold
Alarms:	Overall and spectrum
Note codes:	100 note codes (select up to 6 from 100)
Measurement windows:	Hanning, flattop and rectangular
Multi-point automation:	Up to 12 measurements can be linked for one button push automated data collection for each measurement location

### Data processing and storage

Microprocessor:	MIPS
Memory:	<ul style="list-style-type: none"> <li>• OS 16 MB flash</li> <li>• Disk (user data) 8 MB flash</li> </ul>

### Data processing and storage (continued)

Microprocessor:	MIPS
Memory:	<ul style="list-style-type: none"> <li>• OS 16 MB flash</li> <li>• Disk (user data) 8 MB flash</li> </ul>

### Data displays

Data displays:	Spectrum, time, phase table, and process
	Up to 12 bands (fixed or order base) downloadable from host software
	<ul style="list-style-type: none"> <li>• Machine identification: Plant, train, machine and point ID, point description, units, alarm levels, previous measurements, alarm types</li> </ul>


### Power

Battery size:	Custom rechargeable NiMH
	<ul style="list-style-type: none"> <li>• 1 800 mAh removable battery pack</li> <li>• No loss of data during battery charges</li> <li>• Battery charges in the collector</li> </ul>

### Physical data

Keyboard:	Sealed chemical resistant elastomeric silicon, tactile touch, alpha-numeric
Dedicated keys:	Up, down, right and left two enter keys for right and left hand operation
LCD screen:	1/4 VGA Monochrome touch screen, 240 x 320 pixels (57 x 76 mm) viewable
Size:	<ul style="list-style-type: none"> <li>• Narrowest point: 186 x 93 mm (7.44 x 3.72 in.)</li> <li>• Widest point: 186 x 134 mm (7.44 x 5.36 in.)</li> </ul>
Weight:	700 grams (1.51 lb.)

### Environmental

	II 1G	ATEX and IECEx
	I M1	Ga Ex ia IIC T4 (Ta -20 to +50 °C)
		Ma Ex ia I (Ta 0 to +50 °C)
		CE rated
IP rating:	IP 65 (Dust and Waterproof)	
Temperature range storage:	-20 to +60 °C (-4 to +140 °F)	
Temperature range operating:	-10 to +50 °C (+14 to +122 °F), or as required by the safety approval	
Humidity:	0 to 80% relative humidity, non-condensing	
EMC:	<ul style="list-style-type: none"> <li>• EN61000-6-4 (Emission)</li> <li>• EN61000-6-2 (Susceptibility)</li> </ul>	
Drop test:	1 meter (3.3 ft.), to ATEX specifications	

### Communications

Communication:	RS 232, SKF Microlog protocol
----------------	-------------------------------

### Printing

Printing:	PCL and PJ 200 compatible printers through interface
-----------	--

### Host software

Software:	SKF @ptitude Analyst, version 3.1.3 or higher
-----------	---

## Ordering information

### Standard kit

The SKF Microlog CMXA 51-IS-K-SL Intrinsically Safe (IS) Portable Data Collector / FFT Analyzer standard kit includes:

- SKF Microlog CMXA 51-IS-SL unit, programmed for one-channel route measurements and one-channel off-route
- CD with user manual, utilities, asset information page and literature
- Accelerometer, intrinsically safe (IS), ATEX and IECEx Group I and II (100 mVg) [CMSS 2222]
- Accelerometer cable, Fischer four pin, 2 m (6.6 ft.) coil, to two pin MIL [CMAC 5115]
- Magnetic base [CMAC 5114]
- RS-232 Communication cable [CMAC 5201]
- Intrinsically safe battery pack [CMAC 5105]
- Power adapter / charger [CMAC 5110]
- Hard shell transit case [CMAC 5118]
- Leather hand strap [CMAC 5013]
- Leather neck strap [CMAC 5113]
- Intrinsically safe carrying pouch [CMAC 5111]
- Stylus [CMAC 5251]

### Optional accessories

A number of accessories are available to complement the SKF Microlog CMXA 51-IS. These include:

#### Accelerometers

- Accelerometer, ATEX approved, IS GPII ICP (100 mVg), general purpose, industrial [CMSS 793-EE]
- Accelerometer, intrinsically safe (IS), ATEX and IECEx Group I and II (100 mVg) [CMSS 2222]
- Medium duty magnetic base, 35 mm (1.5 in.) diameter (pull-strength, 20 kg, 1/4 x 28 UNF male thread Ø 35 mm two pole) [CMSS 908-MD]



### Cables

- Accelerometer cable, CA-40, Fischer four pin, 2 m (6.6 ft.) coil, to two pin MIL [CMAC 5115]
- AC / DC signal cable, CA-41, Fischer four pin, 2 m (6.6 ft.) straight, to BNC [CMAC 5116]
- Trigger cable, CA-43 Fischer three pin, 2 m (6.6 ft.) straight, to BNC [CMAC 5117]

### Battery and power supply

- Power adapter / charger [CMAC 5110]
- Intrinsically safe battery pack [CMAC 5105]

### Miscellaneous accessories

- Hard shell carrying case (transit case) [CMAC 5118]
- Leather hand strap [CMAC 5020]
- Leather neck strap [CMAC 5113]
- Intrinsically safe carrying pouch [CMAC 5111]
- Stylus [CMAC 5251]

### Power cords

- Power cord, US [CMVA 3351]
- Power cord, Australia [CMAC 4222-AU]
- Power cord, Switzerland [CMAC 4222-CH]
- Power cord, Denmark [CMAC 4222-DU]
- Power cord, European [CMAC 4222-EUR]
- Power cord, Israel [CMAC 4222-IL]
- Power cord, Italy [CMAC 4222-IT]
- Power cord, Japan [CMAC 4222-JP]
- Power cord, United Kingdom [CMAC 4222-UK]

**Note:** Contact your local SKF Sales Representative for any export restrictions.





# SKF Microlog module suite

Analysis modules designed for ease-of-use and versatility

SKF puts the power of knowledge engineering into your hands with advanced vibration monitoring technologies that have made the SKF Microlog series of analyzers the premier choice for portable hand held condition monitoring.

Designed to handle a wide range of tasks required for analysis of rotating machinery in countless industries, SKF Microlog products offer customers the flexibility to select individual modules for specific types of analysis.

## SKF Microlog analysis modules

- Route
- Balancing
- Data Recorder
- FFT Analyzer
- Conformance Check
- Run up Coast down
- Frequency Response Function
- Spindle Test
- SKF Idler Sound Monitor
- Sensor Setup

The SKF Microlog series of analyzers are available in pre-configured kits that include modules designed to meet specific industry requirements, or modules may also be purchased individually. Each SKF Microlog is shipped with the full SKF Microlog suite of modules installed. To add additional functionality, simply purchase the module and enter the supplied license key.

SKF Microlog analysis modules		 AX series			 GX series			
Module		AX-A	AX-M	AX-F	GX-A	GX-R	GX-M	GX-F
 Route		+	✓	✓	+	✓	✓	✓
 Balancing		+	✓	✓	+	+	✓	✓
 Data Recorder		+	+	✓	+	+	+	✓
 FFT Analyzer		+	✓	✓	+	+	✓	✓
 Conformance Check		+	+	✓	+	+	+	✓
 Run up Coast down		+	+	✓	+	+	+	✓
 Frequency Response Function		+	+	✓	+	+	+	✓
 Spindle Test		+	+	✓	+	+	+	✓
 SKF Idler Sound Monitor		+	+	✓	+	+	+	✓
 Sensor Setup		✓	✓	✓	✓	✓	✓	✓

Legend: (✓) Standard • (+) Upgrade

## Route-based or stand alone analyzer options

The SKF Microlog product line is modular with single purpose stand-alone analyzer options up to fully featured route-based analyzers. SKF Microlog Analyzer with Route and Analyzer modules can transfer data to SKF @ptitude Analyst software for trending, display and analysis. If data analysis results in actionable work, a work order request can be initiated and then transferred directly from SKF @ptitude Analyst to CMMS or ERP systems to assist in work order generation.

SKF @ptitude Analyst also features integration of Analysis and Recording Manager functionality to support the SKF Microlog modules. The stand-alone SKF Microlog Analyzers (-A series) are designed for customers who do not require route-based analyzers. These products transfer data directly to the Analysis and Reporting Manager, which is a stand-alone PC based supporting application, and / or Microsoft Excel for analysis and display. The stand-alone SKF Microlog Analyzers (-A series) can mix and match modules to provide different capabilities including adding route capability.



# Route

## Route based data collection for your plant based maintenance program

Trending vibration data from critical and non-critical machines in your plant is essential to reduce unplanned downtime and maintenance costs. The SKF Microlog Analyzer "Route" module allows users to carry out routine data collection, using a multi-parameter approach, to collect and trend data to help diagnose machinery faults. Users can set up single channel, dual or simultaneous triaxial measurements using SKF @ptitude Analyst software. Your SKF @ptitude Analyst host software's ROUTE feature allows you to build measurement collection sequences (ROUTES) to help users perform the most efficient data collection. SKF Microlog ROUTE data collection is a very easy process, in fact, once you begin data collection, you need only press the Enter button repeatedly to sequentially collect data for every measurement POINT in your ROUTE.

A ROUTE is a list of measurement POINTs arranged in sequence for the most efficient data collection. The advantage of ROUTE data collection is that measurements can be sequenced for the most efficient data collection regardless of their location in your measurement database hierarchy. This method also allows a measurement POINT or POINTs to appear in many different ROUTEs, and provides for a ROUTE statistics report.

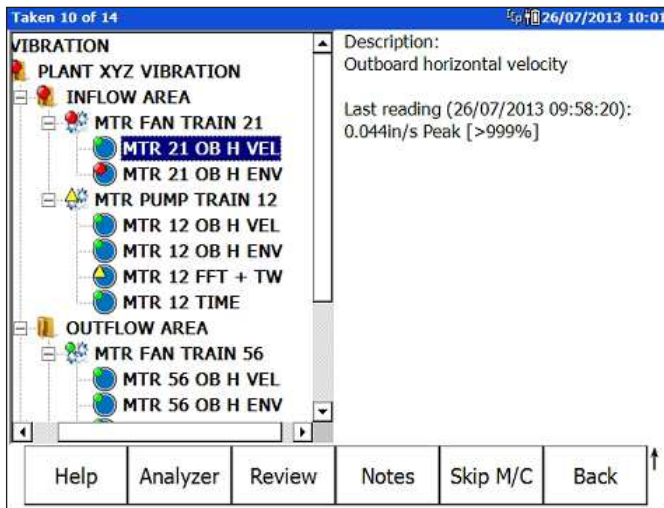


Figure 1. ROUTE POINTs with alarm indicators.

## Features

- Use of SKF's gE enveloped acceleration vibration measurement(s) to determine bearing condition.
- Collect, view and review Spectral and Time data simultaneously.

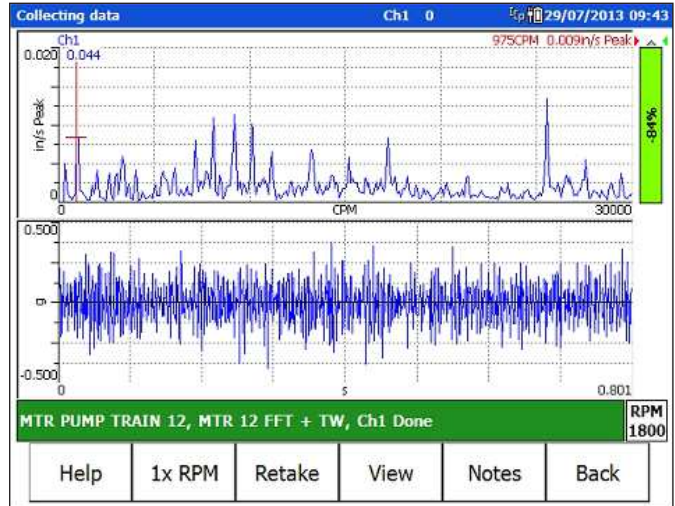


Figure 2. Spectrum and Time data.

- Set alarms and thresholds to indicate machine problems.
- Use harmonic markers to rapidly locate integral orders in relation to their fundamental (1x) – simple, harmonic and fixed.
- Peak find.
- Y-axis graph scaling adjustment allows you to re-scale the plot to get a closer look at low amplitude components.
- Orbit POINTs display the shaft's most recent orbit data for the two input channels (CH1 and CH2). This can be used to show the movement of the shaft within the bearing.

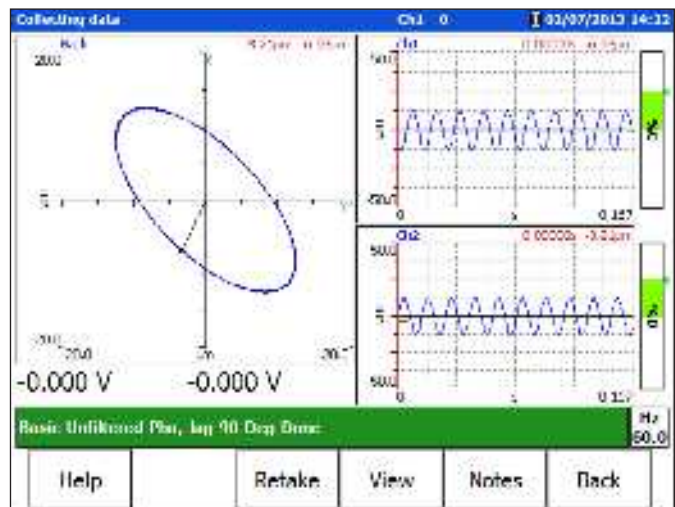


Figure 3. Orbit data.



- Manual Process measurement entry.
- Add coded notes to points or machines.

Figure 4. Coded notes.

- Spectral Banding provides alert and danger alarms on both peak and overall spectral values within a defined frequency band.
- The SKF Microlog data collector allows the user to configure up to 12 measurements for automatic data collection at one measurement point. Using the same sensor, the user need press only one button to sequentially collect all pre-configured MPA measurements.
- Speed tagging allows for very accurate speed values for dynamic SKF Microlog measurements, even in variable speed machinery.
- Display expansion reveals characteristics that may be hidden by the display mode or by the resolution without changing data collection parameters.

## Ordering information

### SKF Microlog Analyzer AX kits with Route module

- CMXA 80-F-K-SL
- CMXA 80-F-K-SL-Z2
- CMXA 80-F-CP-SL
- CMXA 80-M-K-SL
- CMXA 80-M-K-SL-Z2
- CMXA 80-M-CP-SL

### SKF Microlog Analyzer GX kits with Route module

- CMXA 75-F-K-SL
- CMXA 75-F-K-SL-Z2
- CMXA 75-F-K-CP-SL
- CMXA 75-M-K-SL
- CMXA 75-M-K-SL-Z2
- CMXA 75-M-CP-SL
- CMXA 75-R-K-SL
- CMXA 75-R-K-SL-Z2
- CMXA 75-R-CP-SL

### SKF Microlog Analyzer AX and GX series upgrade kits with Route module

#### AX series

- SKF Microlog CMXA 80 AX-M to CMXA 80 AX-F field upgrade [CMXA 80-M/F-SL]
  - Full module upgrade for -M variants
- SKF Microlog CMXA 80 AX-A to CMXA 80 AX-F field upgrade [CMXA 80-A/F-SL]
  - Full module upgrade for -A variants
- SKF Microlog CMXA 80 AX-A Route field upgrade [CMXA 80-A/R-SL]
- SKF Microlog CMXA 80 AX-A to CMXA 80 AX-M field upgrade [CMXA 80-A/M-SL]
  - Route, Balancing and Analyzer module upgrade for -A variants

#### GX series

- SKF Microlog CMXA 75 GX-M to CMXA 75 GX-F field upgrade [CMXA 75-M/F-SL]
- SKF Microlog CMXA 75 GX-A Route field upgrade [CMXA 75-A/R-SL]
- SKF Microlog CMXA 75 GX-A to CMXA 75 GX-F field upgrade [CMXA 75-A/F-SL]
  - Full module upgrade for -A variants
- SKF Microlog CMXA 75 GX-A to CMXA 75 GX-M field upgrade [CMXA 75-A/M-SL]
  - Route, Balancing and Analyzer module upgrade for -A variants



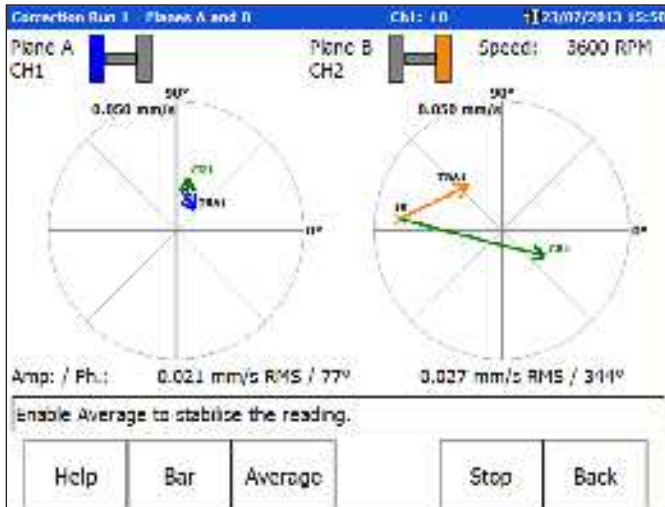


# Balancing

Unbalance is defined as: “The uneven distribution of mass about a rotor’s rotating center line”. The rotating center line can be defined as the axis about which the rotor would rotate if not constrained by its bearings. A secondary center line, often referred to as the geometric center line (the physical center line of the rotor) also exists. When these two center lines coincide, the rotor will be in a state of balance. When they are apart, the rotor will be unbalanced.

## Easy-to-use, on screen guidance

The SKF Microlog Balancing module resolves single plane, two plane and static-couple balances with high precision on rotating machine parts such as rotors for electric motors, fans, turbines, propellers and pumps. Includes two plane balance with prognosis, users can start with a two plane balance and after the initial trial weight run, the SKF Microlog calculates what the residual imbalance would be if you switched to a single plane balance. Clear, comprehensive setup menus and display screens with graphical data representations promote ease of operation. The Balancing module allows you to save your balance jobs for quick re-balancing of the same machine at future dates, or to review past balancing data.



The SKF Microlog is designed to interface with laser tachometers, optical tachometers, or stroboscopes for balancing phase measurements. Using the Balancing module, vibration and phase readings are taken to establish the magnitude and position of the unbalance force. The SKF Microlog then prompts the operator where to attach the correct amount of compensation weight – or where and how much material to remove. The result returns the center of gravity to the center line of the shaft and reduces vibration. Color coding of the balance data indicates when the desired balance level (user defined) has been achieved.

Once a balancing job has been completed the solution is saved in the Balancing module. The file containing all the relevant details about the balance from initial to final amplitudes, to weights and angles can be imported into SKF’s Analysis and Reporting Manager stored alongside the asset and then linked to SKF @ptitude Analyst.

## Key features

- High precision one or two plane balancing
- Balance both slow and fast rotating machines
- Ability to resolve balance weights and trial weight estimator
- Easy to follow interface with graphical outputs

## Benefits of properly balanced machinery

- Minimize structural stress
- Minimize vibration
- Reduced noise levels
- Increased machine and bearing life
- Increased safety
- Lower operating costs

## Specifications

Number of planes:	One or two (simultaneous or sequentially) dynamic or static and dynamic
Input signal types:	Accelerometers, velocity transducers and displacement probes Manual data entry
Measurement parameters:	Acceleration, A-V, A-D, velocity, V-D, displacement
Measurement units:	English, metric
Balance weight positions:	Polar (360°), fixed component (for fan blades, etc.)
Functions:	<ul style="list-style-type: none"> <li>• Fixed weights and vibration levels</li> <li>• Trial weight calculator</li> <li>• Save partially completed runs</li> <li>• Fix position of resultant weight location as number of positions/angle for fan balancing</li> </ul>

## Ordering information

### SKF Microlog Analyzer AX kits with Balancing module

- CMXA 80-F-K-SL
- CMXA 80-F-K-SL-Z2
- CMXA 80-F-CP-SL
- CMXA 80-M-K-SL
- CMXA 80-M-K-SL-Z2
- CMXA 80-M-CP-SL

### SKF Microlog Analyzer GX kits with Balancing module

- CMXA 75-F-K-SL
- CMXA 75-F-K-SL-Z2
- CMXA 75-F-CP-SL
- CMXA 75-M-K-SL
- CMXA 75-M-K-SL-Z2
- CMXA 75-M-CP-SL

### Balancing module upgrade for the SKF Microlog Analyzer AX-A and GX-A series

- CMXA MOD-BAL-SL

### Balancing kit for the SKF Microlog Analyzer AX-A and GX-A series, kit includes:

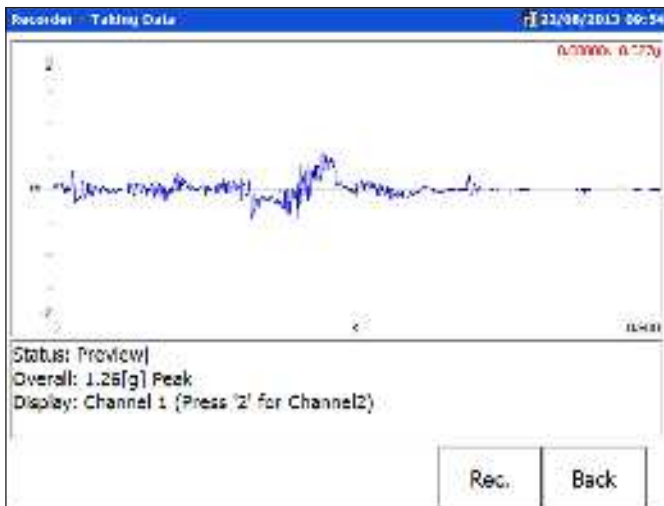
- CMXA BAL-K-SL
  - Balancing and FFT Analyzer modules
  - Accelerometer with integrated cable [CMSS 2111]
  - Laser tachometer kit [CMAC 5030-K]
  - Gooseneck clamp with magnetic base [CMSS 6156]
  - Analysis and Reporting Manager [CMSW 7311-SL]



## Data Recorder

### Digital signal recordings for post-process analysis

The Data Recorder module enables the SKF Microlog to act as a digital signal recorder, allowing you to record a machine's raw vibration signal (time waveform) as a Microsoft Windows .WAV audio file. The .WAV file can be imported into SKF's Analysis and Reporting Manager to post-process the measurements as if you were performing measurements on the machine in real time. Data can be order tracked, time or sample based with selectable windows, sample sizes and much more. Once the post processing has been done, the plots can be assigned to the asset and then linked to SKF @ptitude Analyst. The SKF Microlog GX and AX models can capture up to four channels.



### Examples for use include:

- Analysis of very low speed machinery.
- Capturing intermittent events, and transient vibration signals from non-steady state machinery.
- With a problem machine that can't be run for any length of time without resulting in additional damage, the vibration signal can be recorded as .WAV data while the machine is run for a short time. The machine can then be shut down to avoid further damage and the recorded .WAV file played as many times as required to perform vibration analysis measurements on the machine's recorded vibration signal.

- For ship propulsion systems, instead of spending hours of gas turbine drive time taking analysis measurements at the ship's maximum speed, the ship can be run up to full speed, a five minute .WAV file recorded at full speed, then run back down and hours of analysis measurements can be performed on the recorded vibration signal, saving a lot of costly fuel!
- Signals may be obtained from numerous sources, including; accelerometers, microphones, pressure sensors, strain gauges, current shunts, tachometers, etc. If the data is transferred to a PC, files can be sent via email back to base. As such, if an operator or service engineer is unable to diagnose a problem on site, data can be sent for analysis by an expert.

### Specifications

Input signal options:	Up to four channel input for all models
Frequency ranges:	<ul style="list-style-type: none"> <li>• Channel 1: 0 to 20 kHz maximum frequency range (minimum <math>F_{max}</math> of 2 Hz)</li> <li>• Channel 1 and Channel 2: 0 to 10 kHz maximum frequency range for each channel (minimum <math>F_{max}</math> of 2 Hz)</li> <li>• Channel 1 and Tachometer: 0 to 10 kHz maximum frequency range for each channel (minimum <math>F_{max}</math> of 2 Hz)</li> <li>• Channels 1 and 2 and tach 7.5 kHz</li> <li>• Channels 1, 2 and 3 and tach 7.5 kHz</li> </ul>
Data file format:	.WAV files

### Ordering information

#### SKF Microlog Analyzer AX kits with Data Recorder module

- CMXA 80-F-K-SL
- CMXA 80-F-K-SL-Z2
- CMXA 80-F-CP-SL

#### SKF Microlog Analyzer GX kits with Data Recorder module

- CMXA 75-F-K-SL
- CMXA 75-F-K-SL-Z2
- CMXA 75-F-CP-SL

#### Data Recorder module upgrade for the SKF Microlog Analyzer AX-A and GX-A series

- CMXA MOD-REC-SL



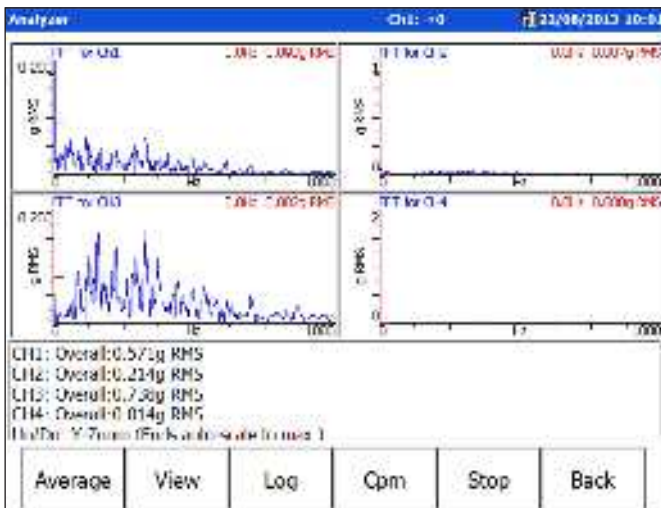
## FFT Analyzer (Including Bump Test functionality)

### View up to 25 600 lines of FFT resolution

The FFT Analyzer module allows you to quickly set up spectral / phase measurements for analysis. The user has the option to select up to four channels (model dependent), up to 25 600 lines of resolution and 80 kHz  $F_{max}$  (single Channel). Data may be stored in the SKF Microlog for future review, and can be transferred to the host computer in comma separated value format (.csv) for import and analysis into the Analysis and Reporting Manager or spreadsheet applications such as Microsoft Excel. Also can be uploaded to SKF @ptitude Analyst as non-route data and can be attached to the point.

The friendly user interface displays spectrum and phase information in a simple, easy to understand format. By providing a phase vector reading (needed to diagnose some machine faults) an operator can build an understanding of the relative motion of individual parts of the machine. Placing sensors, and setting up and taking measurements can all be performed without the need to stop the machine. A tachometer reference is not required as the phase measurement may be taken by cross-referencing channels one and two, allowing for analysis of machinery with buried or covered shafts, such as gear boxes and pumps.

Easy to use predefined measurement settings can be used with the press of one button for immediate analysis, or can be modified to users own requirements. These include Bump Test, Orbit and Cross Phase to name but a few.



### Specifications

Input signal types:	Accelerometers, velocity transducers, displacement probes
Y axis scaling units:	<ul style="list-style-type: none"> <li>Acceleration (g, m/s<sup>2</sup>), A-V (single integration), A-D (double integration)</li> <li>Velocity (IPS, mm/s), V-D (single integration)</li> <li>Displacement (µm, mil)</li> <li>gE, time</li> </ul>
Measurement types:	Spectrum, time waveform, phase, orbit
Display:	<ul style="list-style-type: none"> <li>X axis: Hz, CPM</li> <li>Y axis: Linear, log and log dB</li> </ul>
Input signal range:	±25 V maximum
Signal scaling:	RMS, peak, peak to peak, true peak, true peak to peak
Bearing condition:	gE
Averaging:	<ul style="list-style-type: none"> <li>Exponential, RMS or peak hold</li> <li>Overlap: User definable %</li> </ul>
High pass filters:	Off / 0,36, 1,1, 2, 10, 70, 200, 600, 2 500 Hz

### Ordering information

#### SKF Microlog Analyzer AX kits with FFT Analyzer module

- CMXA 80-F-K-SL
- CMXA 80-F-K-SL-Z2
- CMXA 80-F-CP-SL
- CMXA 80-M-K-SL
- CMXA 80-M-K-SL-Z2
- CMXA 80-M-CP-SL

#### SKF Microlog Analyzer GX kits with FFT Analyzer module

- CMXA 75-F-K-SL
- CMXA 75-F-K-SL-Z2
- CMXA 75-F-CP-SL
- CMXA 75-M-K-SL
- CMXA 75-M-K-SL-Z2
- CMXA 75-M-CP-SL

#### FFT Analyzer module upgrade for the SKF Microlog Analyzer AX and GX series

- CMXA MOD-ANL-SL

#### FFT Analyzer kit for the SKF Microlog Analyzer AX and GX series, kit includes:

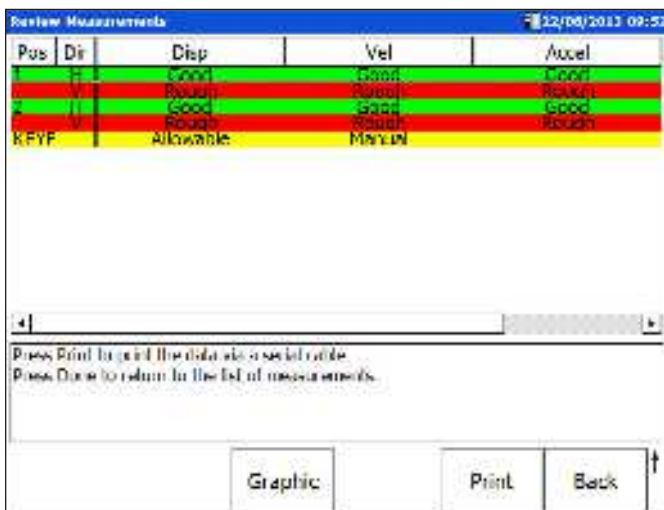
- CMXA ANL-K-SL
  - FFT Analyzer module
  - Accelerometer kit (accelerometer [CMSS 2111] with integral 2 meter cable and magnetic mount [CMSS 908-LD])



## Conformance Check

The Conformance Check module transforms the SKF Microlog into a tool for inspection and maintenance. An automated assessment compares vibration levels with established limits and a pass or fail indication is displayed to show whether the product complies with predefined quality indicators or required standards. Conformance Check has the ability to assess up to 64 individual fault criteria simultaneously and provide an on-screen indication if a warning or alarm level is reached.

### Easy pass / fail indication



By following simple on-screen instructions, an automated vibration assessment indicates the quality and / or health of your pump, motor or rotating mechanical device. This instant assessment enables you to quickly determine if your machinery is operating within its specified limits. The Conformance Check also allows your quality and installation personnel to check that the product complies with your predefined quality indicators and that your finished product meets the required standards, both at final assembly and after initial installation. To assist the user in attaching the transducer to the correct location, a picture of the machine showing the locations can be added to the test template.

### Data analysis

In addition to displaying a simple color coded grading of machinery health, measurement data can also be selectively recorded and stored in the SKF Microlog as required. All recorded data can be transferred to the desktop PC environment using ActiveSync, enabling test results to be uploaded into the Analysis and Reporting Manager or Microsoft Excel for more detailed analysis and presentation of results.

The Analysis and Reporting Manager assigns Check to Conformance data to the asset, allowing post install baseline readings.

### Standards for testing machinery

Machinery conformance may be determined with SKF test standards that are established in accordance with existing industry standards, for example ISO, API, NEMA and IEEE; or users can develop their own compliance test templates based upon custom conformance criteria specific to their business.

The templates can be loaded into the SKF Microlog, automatically setting up your pass/fail limits, facilitating proper machinery testing to meet the correct requirements. Each test template can also be used to form the basis of your own “custom” standard. Limits can be easily altered as required using a PC application included with the Conformance Check module.

If you require custom test templates and do not have available resources to create them, SKF is here to help. We can provide custom test templates. Simply tell us the specified vibration limits you need to measure and we will create a dedicated application specifically for your maintenance routines.

### Specifications

Measurement parameters:	64 bands
Severity ratings:	1 to 8 grades
Input signal types:	Accelerometers, velocity transducers, displacement probes or volts (supports triaxial accelerometers), microphones, dynamic pressure sensors
Measurement types:	Acceleration (g, m/s <sup>2</sup> ), velocity (IPS, mm/s), displacement (µm, mil, thou), gE
Input signal range:	±25 V maximum
Signal scaling:	RMS, peak, peak to peak, average and dBs
Averaging:	<ul style="list-style-type: none"> <li>Exponential or RMS</li> <li>Overlap: User definable %</li> </ul>
High pass filters:	Off/0,36 Hz/1,1 Hz/2 Hz/10 Hz/70 Hz Octave and 1/3 octave band analysis A, B, and C weighting filters

## Ordering information

### SKF Microlog Analyzer AX kits with Conformance Check module

- CMXA 80-F-K-SL
- CMXA 80-F-K-SL-Z2
- CMXA 80-F-CP-SL

### SKF Microlog Analyzer GX kits with Conformance Check module

- CMXA 75-F-K-SL
- CMXA 75-F-K-SL-Z2
- CMXA 75-F-CP-SL
- CMXA 75-MX-K-SL (Marine entry level kit)  
Kit contents as per the CMXA 75-A-K-SL plus CTC module licensed, templates for Marine and Quality Work Instructions (QWI)

- CMXA 75-MXP-K-SL (Marine advanced kit)

Advanced level kit contains the entry level kit plus:

- Laser tachometer kit, 2 meter cable tripod (CMAC 5030K)
- Gooseneck clamp with magnetic base (CMSS 6156)
- Quick connect stud adaptor (CMAC 5220)
- Quick connect mounting stud, 1/4-28 threaded hole for machine mount (50 pieces) (CMAC 5221)
- Preprinted labels with measurement location, 4 sheets (CMAC 5222)
- ARM - Analysis and reporting Manager software (CMSW 7311-SL)

### Conformance Check module upgrade for the SKF Microlog Analyzer AX and GX series

- CMXA MOD-CTC-SL

### Conformance Check kit for the SKF Microlog Analyzer AX and GX series, kit includes:

- CMXA CTC-K-SL
  - Conformance Check module
  - ISO test standard templates
  - Analysis Reporting Manager [CMSW 7311-SL]

### SKF Test Standards

- CMXA CL2-EN Test template in accordance with ISO 10816-2, land based steam turbine / motors
- CMXA CL3-EN Test template in accordance with ISO 10816-3, industrial machines
- CMXA CL4-EN Test template in accordance with ISO 10816-4, industrial gas turbines
- CMXA CL5-EN Test template in accordance with ISO 10816-5, hydraulic, power, gen/pump
- CMXA CL6-EN Test template in accordance with ISO 10816-6, reciprocating machines
- CMXA CL7-EN Test template in accordance with ISO 8528-9, reciprocating driven generators
- CMXA CL8-EN Test template in accordance with BS 4675-1, industrial machines
- CMXA CL9-EN Test template in accordance with BS 4999-142, rotating electric machines
- CMXA CL12-EN Test template in accordance with SKF Certified Rebuilder Program
- CMXA CL13-EN Test template in accordance with NEMA STD MG 7
- CMXA CL14-EN Test template in accordance with IEEE 841
- CMXA CL15-EN Test template in accordance with ISO 10816-7, roto-dynamic pumps



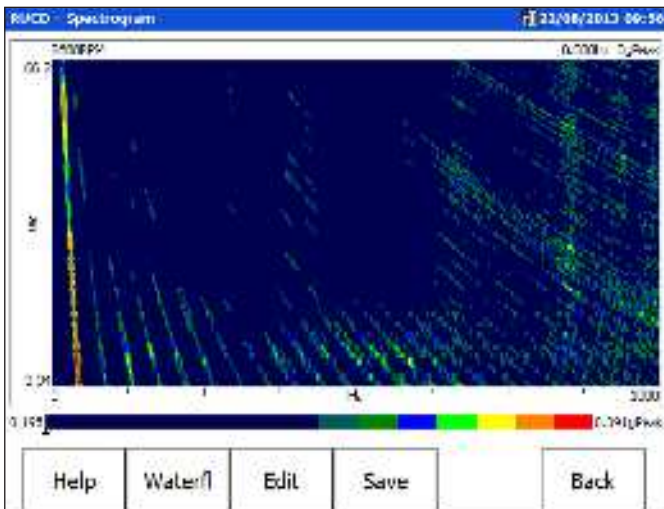


## Run up Coast down

### View machine vibration data during a complete power cycle

The Run up Coast down module analyzes data from machines where noise or vibration levels are changing with speed, time or load (applications that cause transient phenomena) to establish the critical / resonant speeds of a machine. The module simultaneously acquires a vibration and a tachometer signal and stores the data as a time waveform (.WAV file) for further analysis. The result of the analysis can be presented in a variety of formats: Bode, Nyquist, waterfall, color spectrogram or tables. The data may be stored in the SKF Microlog for future review, and can be transferred to the host computer in comma separated value format (.csv) for import and analysis into the Analysis and Reporting Manager or spreadsheet applications such as Microsoft Excel.

In the Analysis and Reporting Manager raw signals and post processed data are linked to SKF @ptitude Analyst, allowing users to provide additional information about the data.



### Key features

- User selectable number of pulses per revolution (including non integer numbers)
- Simultaneous display of any three orders (including non integer orders) and overall value or any four orders without an overall (Bode and Nyquist)
- The analysis and display takes place on the SKF Microlog, where results can be produced immediately while the operator is on site

### Specifications

Signal Input:	Accelerometers, velocity transducers, displacement probes, user defined engineering units (EU's), V AC
Y axis scaling units:	Metric or imperial. Un-integrated, integrated or double integrated units. Examples: g, m/s <sup>2</sup> , mm/s, in/sec, μm, mils
Analysis types:	Bode, Nyquist, waterfall, color spectrogram, table format
Display:	<ul style="list-style-type: none"> <li>• X axis: Hz, CPM or orders</li> <li>• Y axis: Linear, log</li> </ul>
Input signal range:	±25 V maximum
Signal scaling:	RMS, peak, peak to peak
High pass filters:	Off / 0,36, 1,1, 2, 10, 70 Hz

### Ordering information

#### SKF Microlog Analyzer AX kits with Run up Coast Down module

- CMXA 80-F-K-SL
- CMXA 80-F-K-SL-Z2
- CMXA 80-F-CP-SL

#### SKF Microlog Analyzer GX kits with Run up Coast Down module

- CMXA 75-F-K-SL
- CMXA 75-F-K-SL-Z2
- CMXA 75-F-CP-SL

#### Run up Coast Down module upgrade for the SKF Microlog Analyzer AX and GX series

- CMXA MOD-RUCD-SL



## Frequency Response Function

### Structural analysis through modal testing and display

The Frequency Response Function (FRF) module is designed to enable a user to quickly establish a structure's properties (accelerance, apparent mass, mobility, impedance stiffness or compliance) by performing modal analysis using a calibrated hammer for the excitation. The FRF module can also measure and display the transfer function (ratio) between two transducers while a machine is running. Graphical representation of the modal parameters can aid in the characterization of a structure. The SKF Microlog clearly displays the FRF phase and coherence. Measurements can be exported to the Analysis and Reporting Manager for further viewing and analysis of the Operating Deflection Shapes (ODS). Third-party software can also be used to display and animate the spatial response of a structure in slow motion, overall motion and the motion of one part relative to another.



### Key benefits

- Simplified menus help to quickly and easily set up for a structural test
- The FRF module speeds up a modal test by using algorithms to automatically set the input range for the hammer, transducer and time
- Automatic setting of FFT window (rectangular or force and response)
- The FRF module has the ability to automatically detect and reject double hits or overloaded data
- Measure the transfer function between two transducers while a machine is running
- Display of coherence as color, such as the FRF is red where coherence is below the user defined limit

SKF Modal Analysis Hammer kits are available for use with the Frequency Response Function module. Reference model numbers CMAC 5056, CMAC 5057 and CMAC 5058 in the SKF Microlog accessories catalog.

### Specifications

Signal input types:	<ul style="list-style-type: none"> <li>• Modal analysis:               <ul style="list-style-type: none"> <li>– Channel 4 = Modally tuned hammer</li> <li>– Channels 1, 2 and 3 = Accelerometers, velocity transducers or displacement probes</li> </ul> </li> <li>• ODS analysis: Channels 1, 2 and 3 = Accelerometers, velocity transducers and displacement probes</li> </ul>
Y axis scaling units:	<ul style="list-style-type: none"> <li>• Accelerance: g/N, m/s<sup>2</sup>/N, g/lbf, m/s<sup>2</sup>/lbf</li> <li>• Apparent mass: N/g, N/m/s<sup>2</sup>, lbf/g, lbfm/s<sup>2</sup></li> <li>• Mobility: ips/N, mm/s/N, ips/lbf, mm/s/lbf</li> <li>• Impedance: N/ips, N/mm/s, lbf/ips, lbf/mms</li> <li>• Compliance: mil/N, μm/N, mil/lbf, μm/lbf</li> <li>• Stiffness: N/mil, N/μm, lbf/mil, lbf/μm</li> </ul>
Display:	<ul style="list-style-type: none"> <li>• FRF magnitude phase and coherence</li> <li>• Y axis: Linear, log and log dB</li> </ul>
Input signal range:	±25 V maximum
Frequency range:	20 kHz

### Ordering information

#### SKF Microlog Analyzer AX kits with Frequency Response Function module

- CMXA 80-F-K-SL
- CMXA 80-F-K-SL-Z2
- CMXA 80-F-CP-SL

#### SKF Microlog Analyzer GX kits with Frequency Response Function module

- CMXA 75-F-K-SL
- CMXA 75-F-K-SL-Z2
- CMXA 75-F-CP-SL

#### Frequency Response Function module upgrade for the SKF Microlog Analyzer AX and GX series

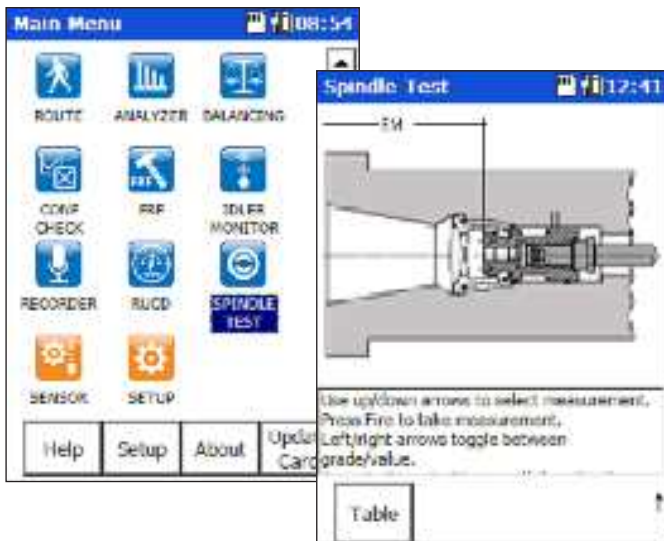
- CMXA MOD-FRF-SL



## Spindle Test

As world leader in the manufacturer of rolling bearings, SKF operates a multitude of machine tools worldwide. Originally based on experience in our bearing production factories, spindle engineering units and super precision bearing knowledge, SKF has developed a global concept consisting of detailed machine tool refurbishment procedures, acceptance criterias, specialized equipment, adapted business processes and global knowledge sharing systems for spindles. The SKF Spindle Assessment kit has been developed in conjunction with the SKF Machine Tool Precision Services and is designed to perform nine tests on machine tool spindles:

- 1 Imbalance
- 2 Mechanical condition
- 3 Bearing condition
- 4 Tool nose run out
- 5 Clamp force (ISO, HSK)
- 6 EM distance
- 7 Belt tension
- 8 Speed accuracy
- 9 Resonant frequency



The easy-to-follow instructions, written by experts in spindle analysis, guide the user in assessing the general condition of a wide variety of spindles under various operating conditions, from spindles mounted in machine tools to those mounted in test rigs. Irrespective of whether your spindle is used for roughing, finishing, critical or ultra finish machining, the colorful display will show you if your spindle is still operating within boundaries set by the experts using an easy to read traffic light indicator system. The resonant frequency test has been taken directly from our world leading vibration analysis instruments to help you get the right answer the first time.

Included in this kit are the Spindle Test, Balancing and Run up Coast down SKF Microlog modules.

## Specifications

Measurement parameters:	64 bands
Severity ratings:	1 to 8 grades
Input signal types:	Accelerometers, velocity transducers, displacement probes or volts (supports triaxial accelerometers), microphones, dynamic pressure sensors
Measurement types:	Acceleration (g, m/s <sup>2</sup> ), velocity (IPS, mm/s), displacement (µm, mil, thou), gE
Input signal range:	±25 V maximum
Signal scaling:	RMS, peak, peak to peak, average and dBs
Averaging:	<ul style="list-style-type: none"> <li>• Exponential or RMS</li> <li>• Overlap: User definable %</li> </ul>
High pass filters:	Off/0,36 Hz/1,1 Hz/2 Hz/10 Hz/70 Hz Octave and 1/3 octave band analysis A, B, and C weighting filters

## Ordering information

### SKF Microlog Analyzer AX kits with Spindle Test module

- CMXA 80-F-K-SL
- CMXA 80-F-K-SL-Z2
- CMXA 80-F-CP-SL

### SKF Microlog Analyzer GX kits with Spindle Test module

- CMXA 75-F-K-SL
- CMXA 75-F-K-SL-Z2
- CMXA 75-F-CP-SL

### Spindle Test module upgrade for the SKF Microlog Analyzer AX and GX series

- CMXA MOD-MTX-SL

### Spindle Assessment kit for the SKF Microlog Analyzer AX and GX series, kit includes:

- CMXA MTX-K-SL
  - Spindle Test, Balancing and Run up Coast down modules
  - Laser tachometer kit [CMAC 5030-K]
  - Gooseneck clamp with magnetic base [CMSS 6156]
  - Run out gauge
  - Belt tension checker [CM 5139 and CMAC 5140]
  - Spindle Test quick start guide



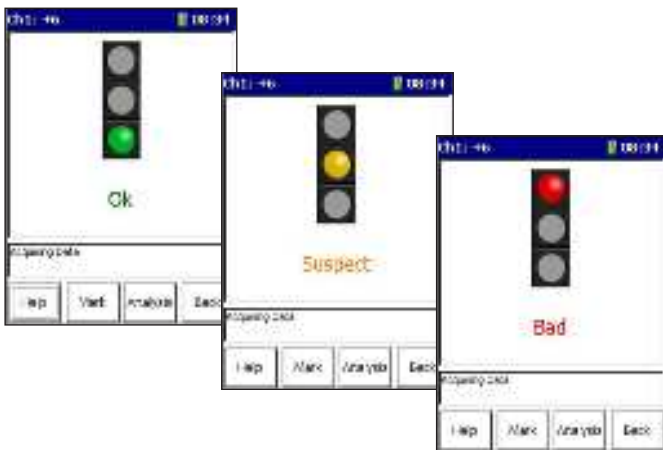
## SKF Idler Sound Monitor

### Detect conveyor idler faults with the SKF Microlog Idler Sound Monitor kit

In many industries, conveyors are an important part of a material handling system especially in mining and cement industries. Failure of an idler can lead to belt damage, expensive downtime and lost production. The SKF Idler Sound Monitor Kit was developed for early detection of faults in conveyor support and return idlers. Using acoustic enveloping technology, the SKF Idler Sound Monitor Kit distinguishes between the sounds of a good idler and a faulty one. It can detect faulty idlers earlier and more reliably than, for instance, when a maintenance worker walks the length of the conveyor belt to listen or look for problems. The kit also provides shorter measurement time and earlier fault detection than a thermographic camera.

With the SKF Idler Sound Monitor module, the screen of the SKF Microlog displays a simple to understand “traffic light” visual alarm:

- Green for OK
- Yellow to indicate a “suspect” idler
- Red to indicate a “bad” idler



The kit includes a microphone encased in a rugged parabolic holder for aiming at the idlers. Headphones issue an audible alarm for fault detection and allow the user to listen to the idler as an additional aid to diagnosis. It is so easy to use that even inexperienced workers are able to detect faults with minimal training. For further fault detection or analysis, the SKF Idler Sound Monitor kit also includes the FFT



Analyzer module. When a faulty idler is identified, the FFT Analyzer module allows you to quickly set up spectral / phase measurements for further fault detection. FFT Analyzer module data may be stored in the SKF Microlog for future review, and can be transferred to the host computer in comma separated value format (.csv) for import and analysis into the Analysis and Reporting Manager or spreadsheet applications such as Microsoft Excel.

With reliable detection up to 3 meters (10 feet) away while walking the belt (under optimal conditions), the SKF Idler Sound Monitor Kit provides maintenance workers with a safe to use and objective tool for idler inspection. The kit serves as an alternative to traditional “walk arounds” that depend on the skill of the worker to listen and recognize a faulty idler. The instrument can be used with one hand, and therefore, complies with safe procedures for three-point contact while working in a plant or mine. Because the microphone can detect faulty idlers on the far side of the belt, there is no need to walk both sides of it. This positions the worker during the measurements at a safe distance from the moving conveyor belt.

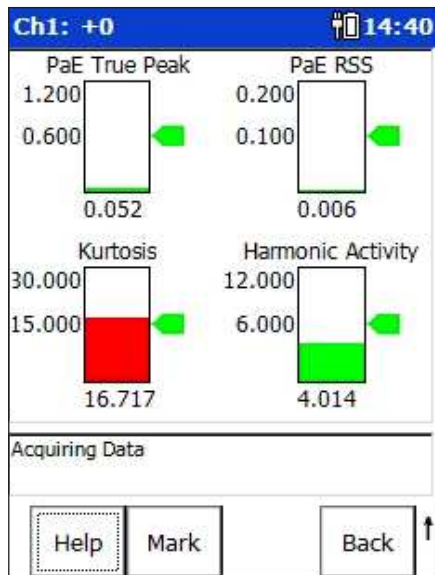
### Benefits

- Early detection of faulty conveyor idlers
- Helps avoid unplanned downtime
- Helps avoid costly belt damage and hazardous repairs
- Offers safer, easier inspection compared to traditional conveyor belt walk arounds
- Can be used as part of an operator driven reliability (ODR) maintenance program
- Includes FFT Analyzer module for further diagnosis

## Measurement overview

SKF Idler Sound Monitor “listens” to each roller’s sound and simultaneously applies four acoustic measurements that are preset to best detect idler faults for typical conveyor conditions. These measurements are set up to monitor the types of sound emitted by conveyor idler rollers and filter out other unwanted sounds. The four techniques used to analyze data and detect faults are:

- 1 gE True Peak
  - Detect impact type vibration
- 2 gE Root Sum Square (RSS) overall
  - Detect overall magnitude of impact vibration
- 3 Kurtosis
  - Detect whether vibration signal is a hiss, crackle, rumbling
- 4 Harmonic Activity Indicator (HAI)
  - Bearing harmonic activity



In addition to the simple traffic light display, customers also have the option to display each measurement value.

## Ordering information

### SKF Microlog Analyzer AX kits with SKF Idler Sound Monitor module

- CMXA 80-F-K-SL
- CMXA 80-F-K-SL-Z2
- CMXA 80-F-CP-SL

### SKF Microlog Analyzer GX kits with SKF Idler Sound Monitor module

- CMXA 75-F-K-SL
- CMXA 75-F-K-SL-Z2
- CMXA 75-F-CP-SL

### SKF Microlog Analyzer Idler Sound Monitor kit [CMXA ISM-K-SL] consists of:

- SKF Idler Sound Monitor module [CMXA MOD-ISM-SL]
- FFT Analyzer module [CMXA MOD-ANL-SL]
- Parabolic reflector [CMAC 5141]
- Adapter plate assembly [CMAC 5142]
- Parabolic windjammer [CMAC 5143]
- Microphone [CMAC 5091]
- Audio headphones, hard hat compatible [CMAC 5403]
- Audio headphone cable [CMAC 5078]
- Cable [CMAC 5093]
- Carrying case [CMAC 5094]

### Software options

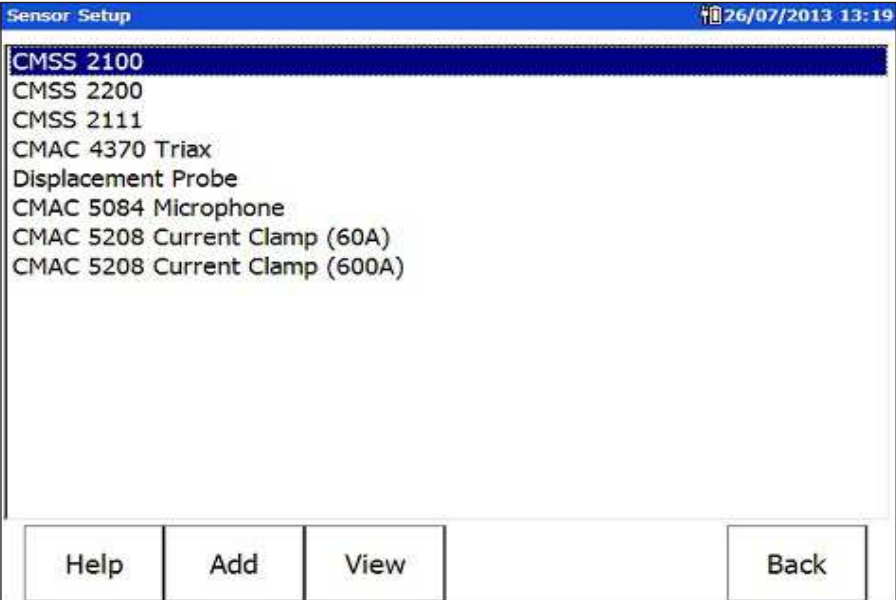
- The SKF Idler Sound Monitor data can be transferred to the host computer in comma separated value format (.csv) for import into spreadsheet applications such as Microsoft Excel or into Microsoft Word tables.
- The FFT Analyzer module data can also be transferred to the host computer in comma separated value format (.csv) for import into spreadsheet applications, as well as into SKF’s Analysis and Reporting Manager.



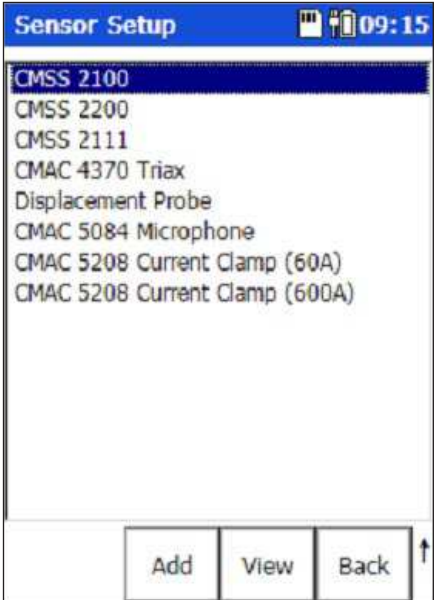
# Sensor Setup

The Sensor setup module provides users with a set of predefined SKF Microlog Analyzer accessories with set parameters attributed to that particular accessory. Users can also add their own sensors to the Sensor Setup module with particular parameters related to their

own sensors based on calibration data. Any of these sensors can then be selected from the set up section within the modules without having to enter the parameters each time they take a measurement. Note that this is not applicable to the Route module.



The SKF Microlog AX series Sensor Setup screen showing default sensors.



The SKF Microlog GX series Sensor Setup screen showing default sensors.





# SKF @ptitude Analyst

Intelligent and scalable software for enterprise-wide communications

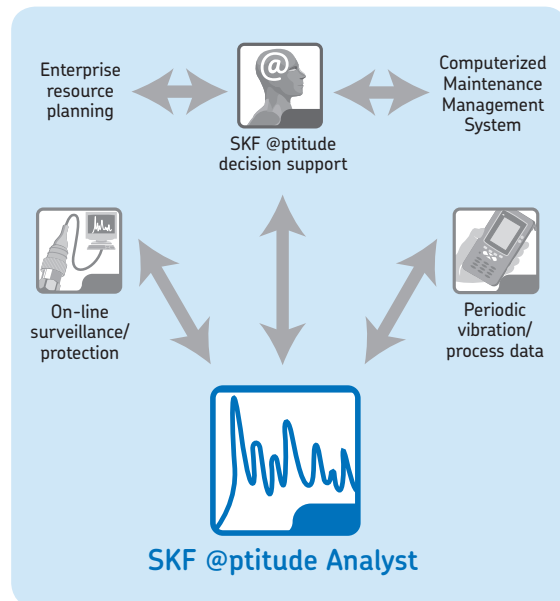
A core platform from the SKF @ptitude Monitoring Suite of reliability software applications

SKF @ptitude Analyst is a comprehensive software solution with powerful diagnostic and analytical capabilities. SKF @ptitude Analyst provides fast, efficient and reliable storage, analysis, and retrieval of complex asset information and makes the information accessible throughout your organization. SKF @ptitude Analyst easily scales to your specific needs, whether it is operator inspection rounds, condition monitoring data collection or in-depth vibration analysis and expert advice.

- One software program to manage asset condition data from portable and on-line devices
- Easy for novice or experienced users to learn and use
- Interconnectivity with multiple enterprise-wide software programs and systems
- Scalable and flexible to meet your unique needs

SKF @ptitude Analyst allows your operations, maintenance and reliability staff to view data from different sources using the same application to communicate information to other departments in a customizable format.

SKF @ptitude Analyst integrates the SKF Microlog, SKF Microlog Inspector and SKF Multilog data collection device ranges into one enterprise-wide software platform.



## SKF @ptitude Analyst – one enterprise-wide software platform

The combined SKF @ptitude Analyst and SKF Multilog IMx-M solution delivers both API 670 machinery protection standard related features like hardware alarm / event log uploads to condition monitoring software, protection module parameters and alarm status information availability in the condition monitoring software and a robust transient machinery state data acquisition feature. The transient machinery data acquisition feature is industry standards based with respect to machine state definitions, controls for starting, transitioning between machine states, and terminating transient events. It offers enhanced data collection modes, allowing users configurable 'run-on' transient data collection periods after entering the Normal Operating state. SKF did this while focusing on simplifying the transient data collection setup, to reduce the likelihood of setup mistakes which can result in missing important data during a transient event or missing the transient machinery event altogether.

SKF @ptitude Analyst can also incorporate data from other sources, such as OPC servers, and seamlessly interface with your organization's Computerized Maintenance Management System (CMMS), Enterprise Resource Planning (ERP) or other information management systems. In this way, SKF @ptitude Analyst's integrated platform forms the hub to share information, foster teamwork, and facilitate consistent and reliable decision-making across functional departments.



# Connectivity

## Staying connected is easy with SKF @ptitude Analyst

Today's data collector systems must support a great variety of data connection methods. SKF @ptitude Analyst supports data collector connections through the USB. For remote users in a Wide Area Network or users with low bandwidth connection, the Thin Client Transfer application may be used to provide a remote but direct access to the database. In addition, this supporting application also permits completely disconnected data collectors to transfer route and vibration data using an email file attachment.

On-line systems with USB, RS 485 or Ethernet connections are supported and can be routed through gateways and firewalls. Services dedicated to each monitoring device or monitoring chain ensure data collection with a high throughput and thus quick live updates.

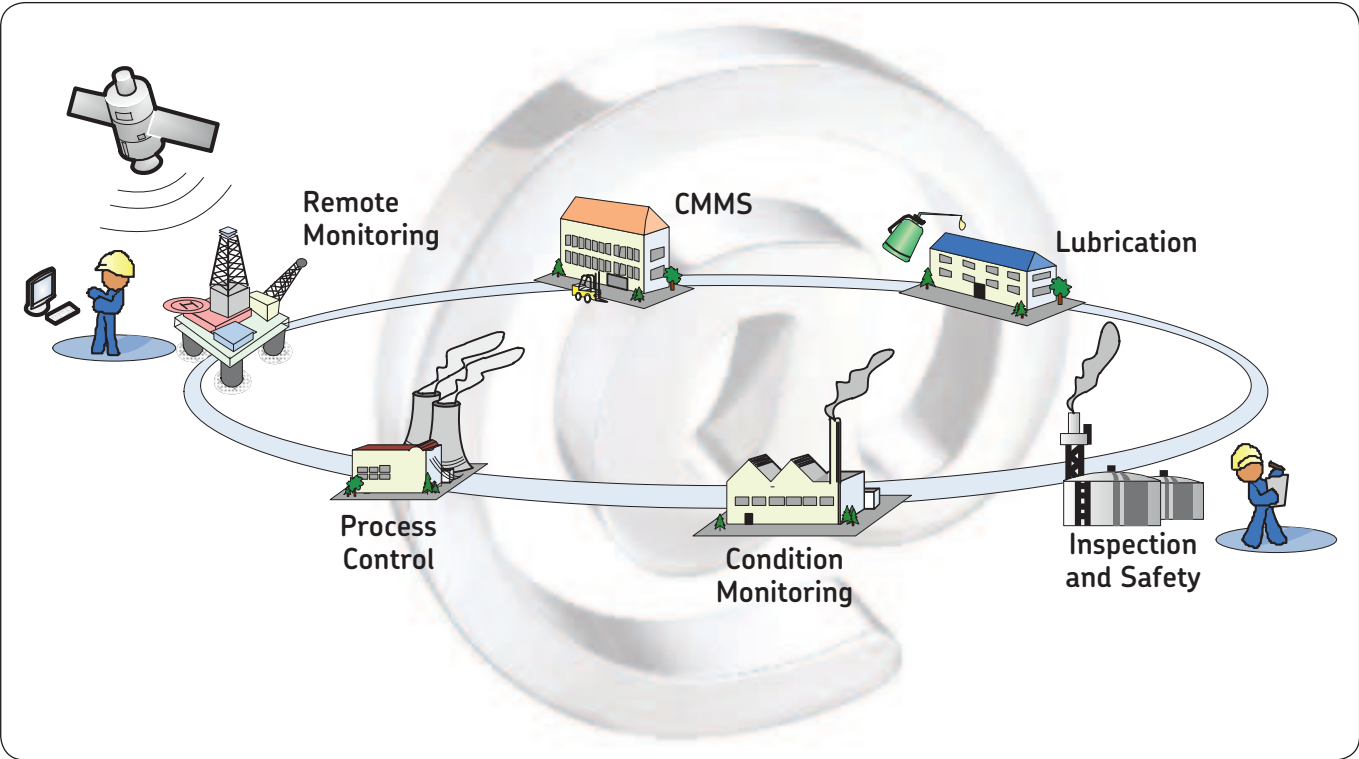
Stay informed 24/7 of your condition monitoring program progress and machine condition changes by using SKF @ptitude Analyst's email and SMS support. You and your colleagues may

receive emails and/or SMS messages of events such as; an scheduled HTML Upload Report with a PDF attachment or a SMS message with plain text describing alarm condition changes.

SKF @ptitude Analyst also supports OPC, or OLE for Process Control, the most widely-used plant data exchange format. With the OPC client interface for SKF @ptitude Analyst, common machinery information, such as load, speed, energy usage, and other important process data, can be obtained and stored in the database for side by side analysis.

Export of Hierarchy nodes in CSV (comma-separated value) file format is also supported in SKF @ptitude Analyst. The CSV output includes full Hierarchy information, POINT setup settings, overall and dynamic values and inspection messages.

XML (Extensible Markup Language), is an open data format supported by SKF @ptitude Analyst. Using this format, a flexible data stream can be set up for automatic import or exports of selected data types. XML data can be imported in Excel or other software with little programming, hence making SKF @ptitude Analyst a truly open system.



## Diagnosis and analysis

### Robust analytical and diagnostic capabilities that are easy to use

SKF @ptitude Analyst continues to deliver class leading functionality by incorporating innovations such as derived functions, CTA (Cyclic Time Average) overlay, and HAL (Harmonic Activity Locator) analysis to its users (CTA and HAL are SKF patented algorithms).

SKF @ptitude Analyst supports many standard graphs and combination graphs that quickly visualize problem areas. Graph overlays provide cursor functions to obtain special information such as frequency band details, average and standard deviation values, skew or kurtosis. Frequency analysis overlays can be used for spectrum graphs to quickly identify common bearing or other fault source frequencies. Implementation of HAL provides harmonic series recognition whereby impact failures are recognized and prioritized by likelihood.

In some cases, the actual stream of information is not directly acquired but rather must be computed based on a combination of acquired values. Therefore, SKF @ptitude Analyst supports Derived Points, which act like virtual data collection points computed by a user programmable macro that operates on any other data stream. For example, you may calculate potential savings from air leaks in a compressed air system by implementing a derived calculation that multiplies the severity of a measurable air leak in a pipe by the cost to generate each unit.

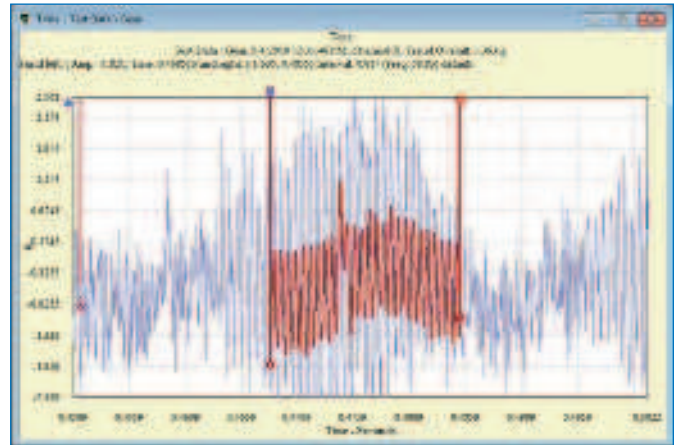
### Automated features simplify configuring and fine-tuning alarms

Since similar machines often use similar alarms, the Alarm Database provides user-defined alarms that can be applied to create alarm settings for multiple measurement points.

An Alarm Wizard assists in creating Statistical Alarms to set alarms for your most important machinery with minimal research and effort. SKF @ptitude Analyst considers historical data and natural variation in machinery vibration levels and generates reliable alarm criteria tailored to the specific machine.

SKF @ptitude Analyst's variable speed alarming features accommodate normal fluctuations in machine speed and function. Alarm limits are automatically reset as speed changes, preventing false alarms.

SKF @ptitude Analyst also supports overdue alarms that notify you if monitoring data was not collected as expected.



*The CTA overlay enhances time waveform analysis when diagnosing broken gear teeth.*

### Enhanced alarm view saves valuable time

Alarm View window displays all points that require immediate attention to help you quickly identify and prioritize follow-up activities and acknowledge alarm conditions. The Alarm Details window offers a comprehensive list of the specific points in alarm and the level and type of alarm, all in one convenient view.

Auto Linking makes it easy to view individual alarms as data plots and alarm details change automatically when you select new points, saving time and simplifying the analysis process.

### Versatile viewing options for multi-parameter analysis

For fast, easy comparison of two or more readings across multiple points, SKF @ptitude Analyst allows you to select a measurement and drag and drop it into the plot, providing convenience and saving time.

The SKF @ptitude Analyst frequency analysis feature helps to identify specific bearing and gearbox frequency sets for rapid detection and correction of probable bearing and machine problems. SKF @ptitude Analyst's on-line data view automatically refreshes to display the latest information, point status and alarm details. Live views provide immediate update of displayed data while the Event Log documents specific occurrences over time. The System Information view provides one-stop navigation between different views, such as Event Log, On-line Data view, individual routes and workspaces.

SKF @ptitude Analyst's database management tools allow you to closely track machine problems to recreate events for predictive maintenance and to perform root cause failure analysis.

## Scalability through application add-ons

### Feature and deployment scalability

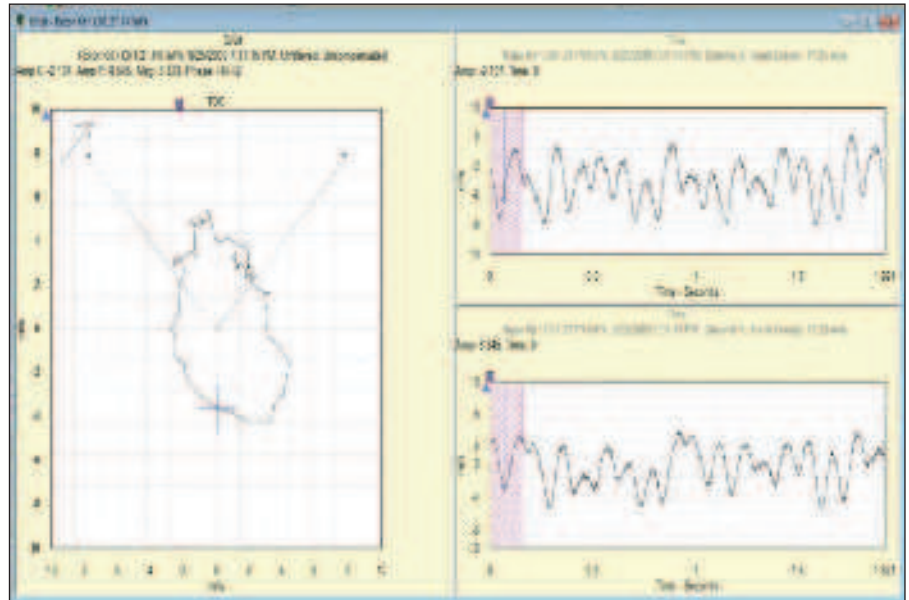
SKF @ptitude Analyst software is configured using license keys. These keys automatically activate or add new functionality to the base application, hence the name “add-on”. Additionally, three different base applications are available: SKF @ptitude Inspector primarily used for Operator Driven Reliability (ODR), SKF @ptitude Analyst for SKF Microlog Analyzer, and SKF @ptitude Analyst, the flagship application of the SKF @ptitude Monitoring Suite.

The SKF @ptitude Analyst software can be deployed as a stand alone application on a single workstation or as a fully networked, distributed application whereby data storage and business logic are kept on separate application servers to help ensure high throughput and availability.

SKF @ptitude Analyst software fully supports virtualization environments. These environments allow SKF @ptitude Analyst to be installed and published onto an enterprise system from a centralized location. Data connections can be made through the virtualization environment or through Thin Client Transfer, which provides fast and secure network connectivity.

### Improved performance

The 2013 Edition of SKF @ptitude Analyst Thin Client Transfer software is significantly faster while providing much more feedback for the operators. These improvements and enhancements include; faster upload speed, new user notifications, status updates and progress animations. This increased efficiency puts more time back into the hands of the user, while providing the most important information about the progress of the transaction; gives your team in the field the peace of mind that their important data has been processed and successfully transferred to the SKF @ptitude Analyst software.



*Orbit graph with synchronized X, Y channel time waveforms.*

### Transient analysis (Run up Coast down)

The Transient Manager is a standard add-on to the SKF @ptitude Analyst that allows you to manage and display all transient hierarchy views. Depending on transient view properties, the transient event may be automatically captured at defined speed changes and other parameters to provide accurate analysis, such as a turbine coast down event. Transient events may be displayed in live or trend (historical) mode using the following graphs:

- The Topology graph illustrates a series of spectra (similar to Campbell plots) using a user-defined color scheme to easily visualize amplitude peaks. This graph also features vector compensation.
- The Bode graph with Damping Cursor is a dual plot consisting of phase and amplitude as a function of rotational speed. The damping cursor enables you to identify resonance information at critical speed when performing transient event analysis.
- The Nyquist graph plots the shaft's movement during a transient event and is similar to a Bode graph but using polar notation. This graph also features vector compensation and optional rotational speed labels.
- The Cascade graph plots data over running speed and features data filtering options for optimal event presentation.

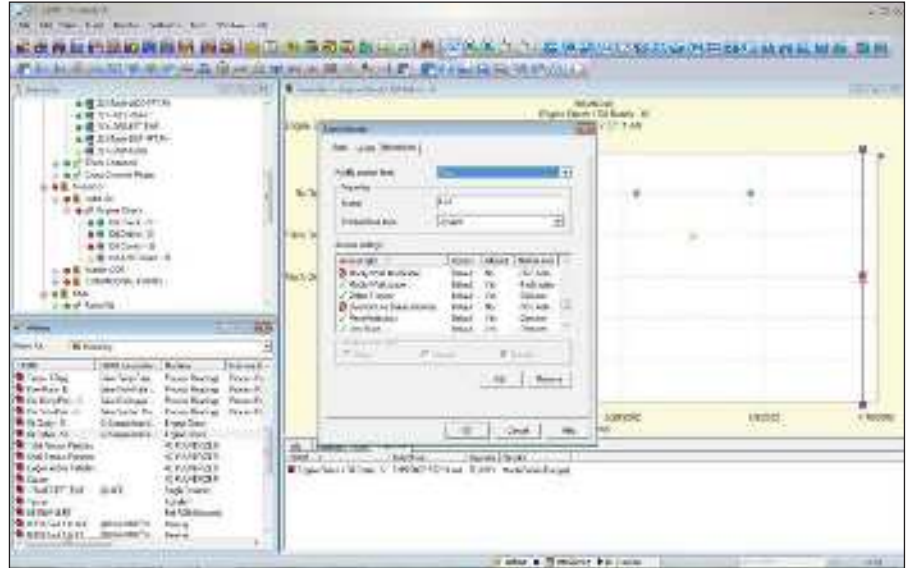


## Access and security

SKF @ptitude Analyst permits access on a customized basis, yet allows the effective exchange of detailed information across functional departments.

### Advanced security system protects data

SKF @ptitude Analyst enables security through the use of security roles. A security role is comprised of many individual security levels that control access rights to data, viewing, reporting, graphing, and more. Assigning users a security role instantly defines the access rights for that user. Changing the security role definition updates the access rights for all assigned users; this is a time-savings feature when managing several users. SKF @ptitude Analyst comes with four default roles, however an unlimited number of roles can be defined.



Personalized access rights allow the software administrator to protect against errors and enable traceability.

### Setup data change log

Measurement setup greatly defines how effective the entire system monitors your assets. For audit purposes, SKF @ptitude Analyst provides a log of changes made to the most important measurement setup details, logging date, responsible person and change detail.

### Customized reports

Extensive report customization features let you control the specific kinds of machine information to be communicated throughout the organization. You can customize the templates or design an entirely new report including data plots, supplemental information and digital images. Additionally, the Report Manager allows you to maintain a history of reports, and pre-configure report content and format to share with selected users.

Reports are generated in HTML format, giving you the flexibility to view on-screen, print, edit using Microsoft Word or Excel, attach to an email or automatically post to your company's intranet when programmed into the Scheduler feature.



Predefined report templates make it easy to generate common reports such as Last Measurement, Exception, Overdue/Noncompliant, History, Route Statistics, and others.

## Features and capabilities

Features / capabilities		SKF @ptitude Analyst CMSW 7400 (■)	SKF @ptitude Analyst for SKF Microlog Analyzer CMSW 7300 (●)
<b>Device support</b>			
SKF Microlog Inspector with Wireless machine condition detector (WMCD)		■	---
SKF Microlog (AX series, GX series, CMVA 65 or CMVA 60)		■	●
SKF Multilog (DMx, IMx, CMU or TMU)		■	---
Wireless WMx, Wireless V/T		■	●
<b>Human Machine Interface (HMI)</b>			
Integrated HMI		■	---
<b>Diagnostics</b>			
Spectrum:	<ul style="list-style-type: none"> <li>Harmonic Activity Index (HAI). A spectrum post processor showing the likelihood of harmonic patterns being present</li> <li>Spectrum plot keyboard shortcuts</li> </ul>	■	---
Time waveform:	<ul style="list-style-type: none"> <li>Time domain statistics including standard deviation, skew, kurtosis, and crest factor</li> </ul>	■	---
Analysis and Reporting Manager		■	---
Transient analysis:	<ul style="list-style-type: none"> <li>Transient event views</li> <li>Vector compensation</li> <li>Live and trend mode graphs</li> <li>Damping cursor</li> </ul>	■	---
<b>Alarms</b>			
Advanced functions including high level analysis functions such as CTA, HAL, Contribution, Statistical functions, etc.		■	---
View alarm status indicators directly at the hierarchy		■	●
Alarm window:	<ul style="list-style-type: none"> <li>Acknowledge alarms and enter comments or recommendations</li> <li>Quickly find and identify all points in alarm within the hierarchy, group, route, workspace, or machine</li> </ul>	■	●
Alarm details:	<ul style="list-style-type: none"> <li>Provides a summary of the type of alarms and status</li> </ul>	■	●
User defined alarm levels:	<ul style="list-style-type: none"> <li>Public alarms that can be shared with other users</li> <li>Private alarms that can only be used by specific users</li> <li>Unlimited number of alarms can be configured</li> </ul>	■	●
Overall alarm levels:	<ul style="list-style-type: none"> <li>Danger high, alert high, alert low, danger low</li> <li>Level alarm, out of window, in window</li> </ul>	■	●
<b>Alarm types</b>			
Overall forecast		■	●
Overall percent change		■	●
Unlimited spectral band (overall and peak)		■	●
Spectral envelope		■	●
Phase angle		■	●
Overall		■	●
Inspection		■	---
Machine condition detector		■	---
Variable speed alarms		■	---
Crash alarm (CMU, TMU only)		■	---
BOV alarming		■	---

## Features and capabilities

Features / capabilities			SKF @ptitude Analyst CMSW 7400 (■)	SKF @ptitude Analyst for SKF Microlog Analyzer CMSW 7300 (●)
<b>Alarm types (continued)</b>				
Statistical alarm calculation wizard with outlier removal			■	●
Statistical band alarm calculation wizard with outlier removal			■	●
<b>Graph displays</b>				
Trend			■	●
Spectrum			■	●
Time domain			■	●
Waterfall			■	●
Cascade			■	---
Topology			■	---
Orbit			■	---
Shaft centerline			■	---
Bode			■	---
Nyquist			■	---
Combination graphs:	<ul style="list-style-type: none"> <li>Trend / spectrum</li> <li>Trend / spectrum / time waveform</li> <li>Trend / speed</li> <li>Trend / speed / spectrum</li> <li>Trend / speed / spectrum / time</li> <li>Trend / speed / time</li> </ul>	<ul style="list-style-type: none"> <li>Waterfall / extracted trend / spectrum</li> <li>Trend / time waveform</li> <li>Spectrum / band trend</li> <li>Bode / Nyquist</li> <li>Speed / bode / orbit / spectrum</li> <li>Speed / bode / spectrum</li> </ul>	■	●
Live views / live bars (SKF Multilog)			■	---
Multiple hierarchy support			■	●
Transient analysis graphs			■	●
<b>Graph display overlays</b>				
Trend:	<ul style="list-style-type: none"> <li>Single cursor</li> <li>Notes indicators</li> </ul>	<ul style="list-style-type: none"> <li>Exponential curve line</li> <li>Curve fit</li> </ul>	■	●
	<ul style="list-style-type: none"> <li>Statistical trend line</li> </ul>		■	●
Spectrum:	<ul style="list-style-type: none"> <li>Single cursor</li> <li>Harmonic cursor with Set Speed function</li> </ul>		■	●
	<ul style="list-style-type: none"> <li>Sideband cursor with dB and Delta values</li> <li>Band cursor</li> </ul>		■	●
	<ul style="list-style-type: none"> <li>Peak cursor</li> <li>Frequency analysis cursor</li> </ul>	<ul style="list-style-type: none"> <li>Diagnostics cursor</li> <li>Spectral band alarm, spectral envelope alarm</li> </ul>	■	---
Time waveform:	<ul style="list-style-type: none"> <li>Single cursor</li> <li>Band cursor</li> </ul>	<ul style="list-style-type: none"> <li>CTA overlay</li> <li>Frequency analysis cursor</li> </ul>	■	●
	<ul style="list-style-type: none"> <li>Band cursor with statistics</li> </ul>		■	---
<b>Display tools</b>				
Baseline spectrum storage			■	●
Waterfall spacing (time / date) based or event			■	●
On-screen integration / differentiation			■	●

## Features and capabilities

Features / capabilities		SKF @ptitude Analyst CMSW 7400 (■)	SKF @ptitude Analyst for SKF Microlog Analyzer CMSW 7300 (●)
<b>Display tools (continued)</b>			
WMx device view:	<ul style="list-style-type: none"> <li>Allows to add an edit WMx devices</li> <li>WMx device diagnostics, battery status and channel information</li> </ul>	■	●
Graph linking:	<ul style="list-style-type: none"> <li>Display information area</li> <li>On-screen text annotation</li> <li>Percent of full scale setting</li> </ul>	■	●
	<ul style="list-style-type: none"> <li>Auto scaling</li> <li>Spectrum cursor micro-manipulation</li> <li>Date range setting</li> </ul>		●
<b>Derived POINT (For detailed information, refer to SKF publication CM3124 EN, "Derived POINTs and their Application")</b>			
Abs(x)		■	●
Alarm_Status(p)		■	---
ArcCos(x)		■	●
ArcSin(x)		■	●
ArcTan(x)		■	●
Average(Dynamic, c)		■	●
Average(x, n)		■	●
Ceil(x)		■	●
Contribution2(iDynamic, iPeriod)		■	---
Contribution3(iDynamic, iPeriod, iSpeed)		■	---
Cos(x)		■	●
Count_Spikes(Twf, c, Th, Bias)		■	---
CrestFactor(iDynamic)		■	---
CTA_PK_PK(iDynamic, iPeriod)		■	---
CTA_RMS(iDynamic, iPeriod)		■	---
CUSUM(x, m)		■	---
Deg2Rad(x)		■	●
DeltaTime(x)		■	●
DeltaValue(x)		■	●
Energy_Value(iFFT, iBandIndex)		■	---
Floor(x)		■	---
Forecast_Exp(x, n, Alarm)		■	---
Forecast_Lin		■	---
HAL(iSpectrum, iFrequency)		■	---
Kurtosis(Dynamic, c)		■	---
Kurtosis(x, n)		■	---
LN(x)		■	●
Log(x)		■	●
Max(x, y)		■	---
Min(x, y)		■	---
Mod(x, y)		■	---

## Features and capabilities

Features / capabilities	SKF @ptitude Analyst CMSW 7400 (■)	SKF @ptitude Analyst for SKF Microlog Analyzer CMSW 7300 (●)
<b>Derived POINT (continued)</b>		
Operating Time	■	●
PeakValue(iFFT, iBandIndex)	■	---
PercentChange(?)	■	●
Power(a, b)	■	●
ROC(x, iDays)	■	---
Round(x)	■	---
Sin(x)	■	●
Skew(Dynamic, c)	■	---
Skew(x, n)	■	---
Smax(iTwf)	■	---
Speed(iDynamic)	■	---
Sqrt(x)	■	●
Stdev(Dynamic, c)	■	---
Stdev(x, n)	■	---
Sum Duration	■	●
Sum Period	■	●
Sum Since	■	●
Tan(x)	■	●
Total Operating Time	■	●
Trunc(x)	■	---
XMag(Twf, cA, cB, spdFactor)	■	---
XPhase(Twf, cA, cB, spdFactor)	■	---
<b>Storage, file formats and networking</b>		
Oracle support	■	●
Microsoft SQL Server support	■	●
Binary importing and exporting (.MAB)	■	●
CSV (Excel) exporting	■	●
XML importing and exporting	■	●
Supports for LAN and WAN	■	●
Support for Thin Client (Terminal) environments	■	●
Operates with Citrix, Terminal Server, and Microsoft Windows 2008 application server	■	●
Unlimited number of:	<ul style="list-style-type: none"> <li>• Hierarchies</li> <li>• Collection points</li> </ul>	<ul style="list-style-type: none"> <li>• Measurements</li> <li>• Workspaces</li> </ul>
<b>General</b>		
Email and SMS support for:	<ul style="list-style-type: none"> <li>• Scheduled events, i.e., an scheduled report is generated</li> <li>• Unscheduled events, i.e., an alarm condition change</li> </ul>	■ ●
Multiple languages available:	<ul style="list-style-type: none"> <li>• Standard languages: English, French, German, Portuguese, Spanish, Swedish</li> <li>• Non-standard languages: Russian, Simplified Chinese</li> </ul>	■ ●

## Features and capabilities

Features / capabilities		SKF @ptitude Analyst CMSW 7400 (■)	SKF @ptitude Analyst for SKF Microlog Analyzer CMSW 7300 (●)
<b>General (continued)</b>			
True multi-processing operating environment allowing simultaneous background and foreground processing. Consistent with Microsoft Windows functions:	<ul style="list-style-type: none"> <li>• "Right-click" functionality</li> <li>• Drag and drop</li> <li>• Cut / copy / paste</li> <li>• Context sensitive help</li> </ul>	■	●
Allows for complete integration of third party applications		■	●
User preferences to allow customization		■	●
Complete user and installation manuals on installation DVD		■	●
Product Support Plans (PSP) available		■	●
Optional interfaces available:	<ul style="list-style-type: none"> <li>• OPC Client</li> <li>• CMMS (contact SKF Sales Representative for details)</li> </ul>	■	●
Measurement archiving		■	●
<b>Measurement types</b>			
Acceleration, Velocity, Displacement		■	●
Amps, Volts (AC or DC)		■	●
Acceleration Enveloping (gE)		■	●
Machine condition detector (MCD) Velocity, Acceleration Enveloping, Temperature		■	---
Temperature (Celsius and Fahrenheit)		■	●
Flow (GPM, LPM)		■	---
High Frequency Detection (HFD, DHFD)		■	●
Inspection (User definable)		■	---
Operating hours		■	---
Operating time (Elapsed and accumulative) (SKF Multilog)		■	---
Pressure (PSI and Bars)		■	---
SEE		■	●
Machine speed		■	●
Bias output voltage (BOV) (IMx)		■	---
Logic (IMx)		■	---
<b>Measurement attributes</b>			
Conditional POINTs:	<ul style="list-style-type: none"> <li>• SKF Microlog Inspector</li> </ul>	■	---
Control POINTs:	<ul style="list-style-type: none"> <li>• SKF Microlog Analyzer</li> <li>• SKF Multilogs IMx, CMU, TMU, WMx</li> </ul>	■	●
Support for Multi-Point Automation (MPA)		■	●
English or metric units		■	●
Triax sensor support:	<ul style="list-style-type: none"> <li>• SKF Microlog Analyzer</li> <li>• SKF Multilogs CMU, IMx</li> </ul>	■	●
Multi-channel support:	<ul style="list-style-type: none"> <li>• SKF Microlog Analyzer AX series, GX series version 2.0 (or higher)</li> <li>• SKF Multilogs DMx, IMx</li> </ul>	■	●
Alternative time zone support for on-line devices located across a wide area		■	---
Display and storage of non-collection events:	<ul style="list-style-type: none"> <li>• SKF Multilog IMx</li> <li>• SKF microlog Inspector</li> </ul>	■	---



## Features and capabilities

Features / capabilities		SKF @ptitude Analyst CMSW 7400 (■)	SKF @ptitude Analyst for SKF Microlog Analyzer CMSW 7300 (●)	
<b>Reporting</b>				
Preserved reports	<ul style="list-style-type: none"> <li>Enables you to maintain a history of reports</li> </ul>	■	●	
Shared reports	<ul style="list-style-type: none"> <li>Allows you to share and preconfigure reports for selected users</li> </ul>	■	●	
Emailing of reports with PDF attachment:	<ul style="list-style-type: none"> <li>Send reports to individuals or groups of contacts</li> </ul>	■	●	
Send reports to screen, HTML file, printer		■	●	
HTML file can be posted to internet, intranet, emailed		■	●	
HTML files can be opened and modified further using Microsoft Office products, such as Word, Excel, PowerPoint		■	●	
Customizable report content		■	●	
Data plots, supplemental information, and digital images can be included in reports		■	●	
Report template types:	<ul style="list-style-type: none"> <li>Blank</li> <li>Last measurement</li> <li>Exception</li> <li>Overdue / noncompliant</li> <li>Pending overdue / noncompliant</li> <li>Compliance</li> <li>Collection status</li> </ul>	<ul style="list-style-type: none"> <li>Route history / route statistics</li> <li>Set statistics</li> <li>Upload statistics</li> <li>History</li> <li>Inspection</li> <li>Work notification</li> <li>User defined</li> </ul>	■	●
Report templates allow quick and easy report configuration for use and reuse		■	●	
Alarm acknowledgment comments / notes		■	●	
<b>Security and stability</b>				
Supports definition of user profiles / roles		■	●	
Unlimited number of user profiles / roles		■	●	
Fully configurable user rights that allow you to read, view, and have full access		■	●	
Access rights can be restricted to specific hierarchy or allow multiple hierarchy access		■	●	
Point setup change log. Maintains a log of what was changed by whom and when. Preference setting determines if a reason message is required before allowed to make setup changes.		■	●	
Communication with on-line devices is supported by Windows services. Multiple services may be used to provide a high degree of security. Service requires no user login.		■	●	
Communication services are auto-restarted in case of failures		■	●	
DAD services system – down e-mail alerts		■	●	
<b>Templates and wizards</b>				
Statistical alarm wizards with outlier removal use historical data to help refine overall alarms		■	●	
Hierarchy template wizard allows for rapid hierarchy creation and machine templates for reuse		■	●	
Report template allows for the custom configuration of reports and report template for reuse and sharing		■	●	
Scheduler wizard helps configure and preset recurring activities such as report generation, data archival and task reminders		■	●	

## Hardware requirements

### Stand alone configuration

- Running SKF @ptitude Analyst / SKF @ptitude Inspector
- Running Oracle or Microsoft SQL Server database management system
- Storing data

Configuration		Minimum requirements	Recommended requirements
Operating system (Note 1)		Windows 7 <b>OR</b> Windows XP Professional with Service Pack 2+	Windows 7 Professional and Ultimate, or Windows 8.1 Enterprise or Pro
Processor (Note 2)		Intel 2.0 GHz, 32 or 64-bit, or better	Intel Quad-core processor 64-bit
RAM		6 GB	8 GB or more
Disk space available for standalone computer (Note 3)		10 GB	30 GB or more
DVD drive		<b>One (1) required</b>	<b>One (1) required</b>
Database support (Notes 5 and 6)	<b>Oracle</b>	Version 11g	Version 12c
	<b>Microsoft SQL Server</b>	SQL Server 2008 R2 SP1	SQL Server 2014 SP1 (SQL Server recommends NTFS file format)

USB port for SKF Microlog / SKF Microlog Inspector transfer and serial port for SKF Multilog IMx configuration.

### Network configuration – Database server

- Running Oracle or Microsoft SQL Server database management system
- Storing data

*Network configuration for up to 35 Clients and one database. Installations of 50 Clients or greater will require an on-site assessment by our Field Service Engineers.*

Configuration		Minimum requirements	Recommended requirements
Operating system		Windows 2008 Server	Windows 2008 Server or Windows 2012 R2
Processor (Note 2)		Intel 2.0 GHz, 32 or 64-bit, or better	Intel Quad-Core I7 Processor 64-bit
RAM		8 GB	12 GB or more
Quantity of hard drives (Note 4)		3	5
Disk space available (Note 3)		10 GB	30 GB or more
DVD drive		<b>One (1) required</b>	<b>One (1) required</b>
Database support (Note 5)	<b>Oracle</b>	Version 10g or 11g	Version 12c
	<b>Microsoft SQL Server</b>	SQL Server 2008 R2 SP1	SQL Server 2014 SP1 (SQL Server recommends NTFS file format)

### Note 1

Windows 7 (32 or 64-bit) Professional or Ultimate Editions (please visit the Windows 7 and UAC compatibility matrix in [skf.com/cm](http://skf.com/cm) [[Windows 7 and UAC compatibility](#)]), Microsoft.NET Framework 3.5, 4.0, Windows 4.5 Installer and Windows Mobile Device Center 6.1.

### Note 2

These requirements apply to SKF @ptitude Analyst complete with database management system. Other applications running simultaneously may degrade performance. Hyper-threading should be disabled in some systems.

### Note 3

These requirements ONLY apply to SKF @ptitude Analyst complete with database management system. Additional storage disk space is required for data.

### Note 4

The major benefits of spreading Oracle across three or more hard disks at the server is the improved speed, and improved recoverability of a previously archived database. The recommended five disk configuration provides the optimal protection for backup, recovery, indexing, and speed. Disk / file configuration should ONLY be handled by a SKF Field Service Technician certified on SKF @ptitude Analyst. If using RAID, the combination of RAID 0 and RAID 1 is recommended over RAID 5.

### Note 5

Oracle 10g Express Edition is supported under Windows XP 32-bit only. In a Network Client configuration you must install Oracle 32-bit Client Software. If using Windows 7 (32 or 64-bit), then Oracle 11g must be installed.

### Note 6

Running SKF Multilog On-line System devices to monitor transient events requires full database support. Express versions will not support performance requirements for the system.

### Notice

If running other system configurations, please contact your local SKF Representative to inquire about compatibility.

## Hardware requirements

### Network configuration – Network Client

- Running SKF @ptitude Analyst / SKF @ptitude Inspector
- Running database client software

*Network configuration for up to 35 Clients and one database. Installations of 50 Clients or greater will require an on-site assessment by our Field Service Engineers.*

Configuration		Minimum requirements	Recommended requirements
Operating system (Note 1)		Windows 7 <b>OR</b> Windows XP Professional with Service Pack 2+	Windows 7, Windows 8.1 Enterprise or Pro
Processor (Note 2)		Intel 2.0 GHz, 32 or 64-bit, or better	Intel Quad-Core 64-bit
RAM		6.0 GB	8.0 GB or more
Disk space available for each network client		10 GB	30 GB or more
DVD drive		<b>One (1) required</b>	<b>One (1) required</b>
Database support (Note 5)	Oracle	Version 11g	Version 12c
	Microsoft SQL Server	SQL Server 2008 R2 SP1	SQL Server 2014 SP1 (SQL Server recommends NTFS file format)

USB port for SKF Microlog / SKF Microlog Inspector transfer and serial port for SKF Multilog IMx configuration.

### Network configuration – Application server

- Running SKF @ptitude Analyst / SKF @ptitude Inspector

*Network configuration for up to 35 Clients and one database. Installations of 50 Clients or greater will require an on-site assessment by our Field Service Engineers.*

Configuration		Minimum requirements	Recommended requirements
Operating system (Note 1)		Windows 7 <b>OR</b> Windows 2008 Server	Windows 7, Windows 8.1 <b>OR</b> Windows 2008 Server, Windows 2012 R2
Processor		Intel 2.0 GHz, 32 or 64-bit, or better	Intel Core 2 Duo, 3.0 GHz, 32 or 64-bit, or better
RAM		8.0 GB	12 GB or more
Disk space available		10 GB	30 GB or more
DVD drive		<b>One (1) required</b>	<b>One (1) required</b>

#### Note 1

Windows 7 (32 or 64-bit) Professional or Ultimate Editions (please visit the Windows 7 and UAC compatibility matrix in [skf.com/cm](http://skf.com/cm) [[Windows 7 and UAC compatibility](#)]), Microsoft.NET Framework 3.5, 4.0, Windows 4.5 Installer and Windows Mobile Device Center 6.1.

#### Note 2

These requirements apply to SKF @ptitude Analyst complete with database management system. Other applications running simultaneously may degrade performance. Hyper-threading should be disabled in some systems.

#### Note 3

These requirements ONLY apply to SKF @ptitude Analyst complete with database management system. Additional storage disk space is required for data.

#### Note 4

The major benefits of spreading Oracle across three or more hard disks at the server is the improved speed, and improved recoverability of a previously archived database. The recommended five disk configuration provides the optimal protection for backup, recovery, indexing, and speed. Disk / file configuration should ONLY be handled by a SKF Field Service Technician certified on SKF @ptitude Analyst. If using RAID, the combination of RAID 0 and RAID 1 is recommended over RAID 5.

#### Note 5

Oracle 10g Express Edition is supported under Windows XP 32-bit only. In a Network Client configuration you must install Oracle 32-bit Client Software. If using Windows 7 (32 or 64-bit), then Oracle 11g must be installed.

#### Note 6

Running SKF Multilog On-line System devices to monitor transient events requires full database support. Express versions will not meet performance requirements for the system.

#### Notice

If running other system configurations, please contact your local SKF Representative to inquire about compatibility.

## Ordering information

- SKF @ptitude Analyst software for SKF Microlog Analyzer, SKF Microlog Inspector, and SKF Multilog Systems (DMx, WMx, IMx, TMU, CMU) [CMSW 7400]
- SKF @ptitude Analyst for SKF Microlog Analyzer and SKF Multilog On-line System WMx [CMSW 7300]
- SKF @ptitude Inspector [CMSW 7200]

All models are available in Single and Multi-client configurations. Please contact your local SKF sales representative for Multi-client model information.

## Installation and training

Installation and training is available through your local SKF sales representative.

# Analysis and Reporting Manager

## Support application for the SKF Microlog Analyzer AX and GX series

SKF's Analysis and Reporting Manager is a PC based application for transferring, displaying and analyzing data generated by the application modules of the SKF Microlog AX and GX series instruments.

With Analysis and Reporting Manager, data may be exported to ASCII or Excel files for easy viewing using Microsoft Excel or other third party software. Analysis and Reporting Manager provides an easy mechanism for uploading data from your instrument via USB, once uploaded, the data is automatically shown in the application main window, and a single mouse click is all that is needed to view the data in a powerful, interactive graphical plot. Analysis and Reporting Manager also provides a range of post-processing features that allow users to get the most out of the application module data.

Analysis and Reporting Manager support is provided to the following modules:

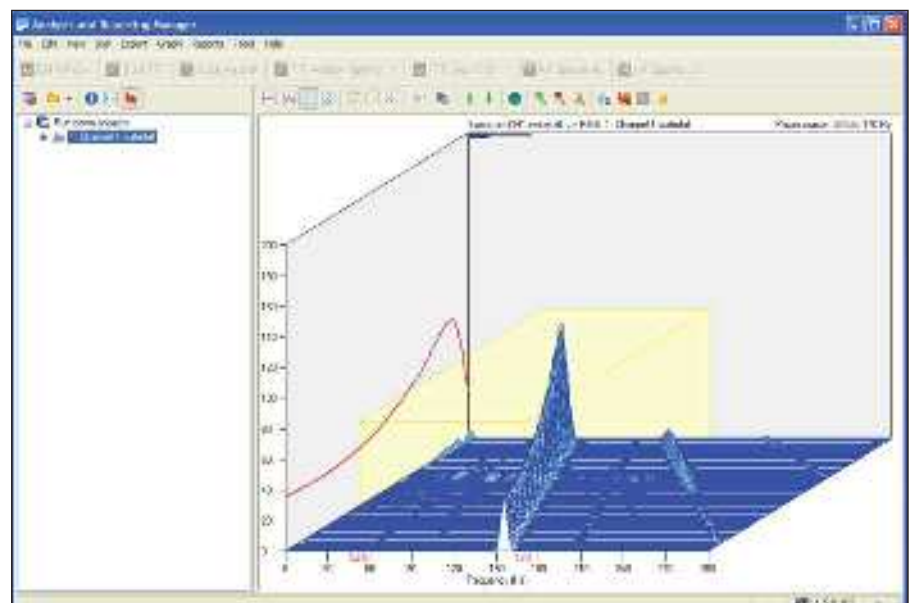
- Balancing
- Data Recorder
- Frequency Response Function (FRF)
- Run up Coast down (RuCd)
- Spindle Test
- FFT Analyzer
- Conformance Check

Data collected for these modules can be imported into the SKF's Analysis and Reporting Manager, stored alongside the asset and then linked to SKF @ptitude Analyst, allowing users to provide additional information about the data.

**Note:** "Asset" has no meaning in the stand-alone version. For the add-on version, it means you can associate some Analysis Reporting Manager data with a node in the SKF @ptitude Analyst hierarchy.

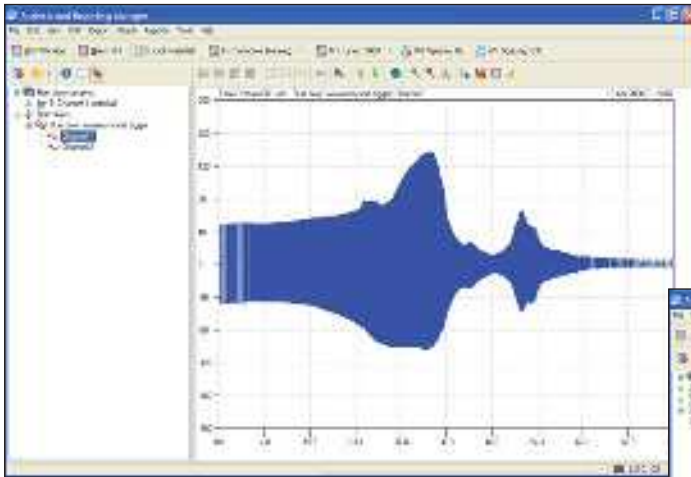
### Key features

- Digital Signal Processing (DSP) window – enables post processing of time waveform data using Fast Fourier Transform (FFT) routines into Spectrum or Waterfall plots
- File download management – specify file locations on your PC or network; data is sorted by date / time and module type when it is uploaded
- Import of Conformance Check module results, including the report table with the machine graphic, as well as the spectral results files
- Conformance Check results can be combined to generate trend plots
- Import of Run up Coast down (RuCd) module data files, including the original .WAV recording and the CSV results files
- Export of data to UFF (type 58) files allowing easy import into structural analysis packages
- Batch exporting of data into Microsoft Excel, allowing consolidation of multiple measurements into a single workbook with multiple tabs, or separate workbooks
- Creation of Microsoft Word documents from data, including support of templates via bookmarks. Graph plots as well as numerical values may be included, and Conformance Check results tables may be created.
- Custom balance reports created in Microsoft Word

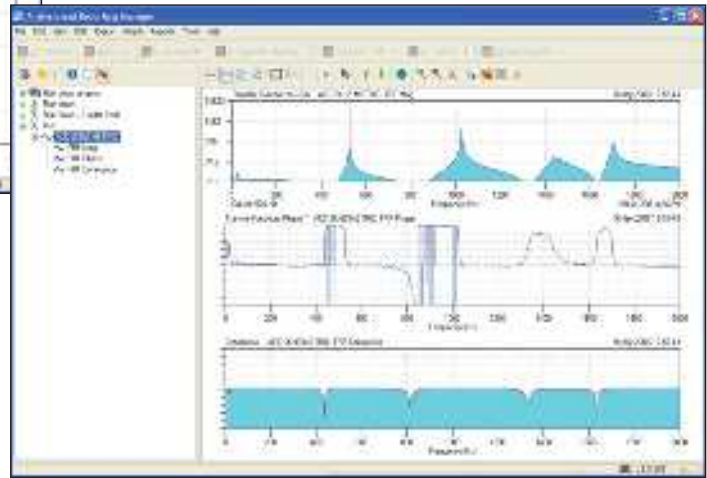


*Analysis and Reporting Manager waterfall plot with peak-in-band cursor.*

## Enhanced functionality



*Analysis and Reporting Manager time domain plot – run down recording (left), transfer function – Frequency Response Function (FRF) plot (below).*



### Powerful interactive graph plots:

- Single and multiple time waveform or spectrum
- Waterfall
- Overlay
- Orbit and polar plots (with a moving zoom function allowing easy traversal of orbit / polar data)
- Bode and Nyquist
- Spectrogram
- Balance run polar plots

### Easy to use graphical display:

- Zooming and magnification
- Dynamic cursor types (harmonic, power, peak-in-band, side band, etc.)
- Integration, control of engineering units and vertical scale
- Unlimited annotations and notes, allowing you to record and highlight information about your data

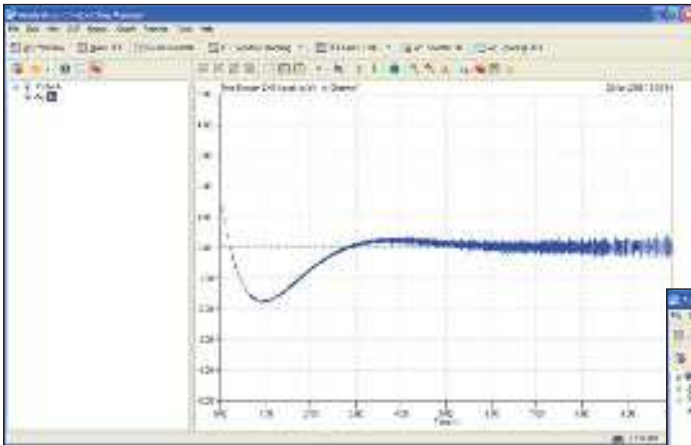
### Enhanced functionality

Analysis and Reporting Manager is available as a stand-alone product as well as the embedded version that is included with both the CMSW 7400 and CMSW 7300 software products. Analysis and Reporting Manager functionality allows users to upload, view and post-process field collected data from modules in our SKF Microlog Analyzers.

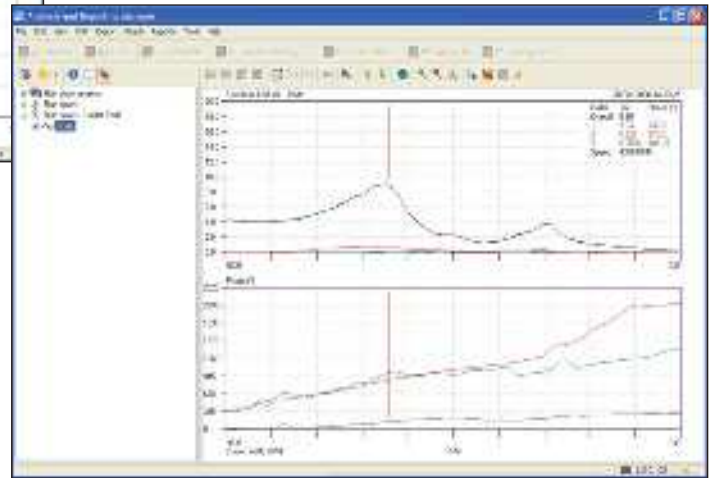
SKF's Analysis and Reporting Manager application has the ability to calculate enveloped (gE) overall limits and store calculations with the collected data. SKF's acceleration enveloping (gE) feature contains a set of calculated warning and alarm levels. These warning limits depend on a specific bearing bore, speed and the Fmax selected for your enveloped spectrum. To assist in setting the correct alarm and warning levels, the SKF bearing database lookup feature is built right into the Analysis and Reporting Manager software.

The Digital Signal Processing Module (DSP) provides several post-processing features acceleration enveloping (gE) analysis. The Digital Signal Processing menu has many advanced features including waterfall, and Fast Fourier Transforms (FFT) long with other advanced features. This module supports the recording of raw data

## Customized reporting and data management



*Analysis and Reporting Manager time domain plot (left) and bode plot (below).*



from a series of sensors to allow users to collect data from a machine running for a short duration. This can be very helpful where route collection would not normally collect enough data; either fast enough, or where collection of data over an extended period of time is not practical. The raw signals can then be post processed, in the Analysis and Reporting Manager software, to produce all of the spectra required for analysis.

SKF Analysis and Reporting Manager post processing options allow you to perform SKF acceleration enveloping (gE) and display the results in the analyzer window. Once the data is captured, it can then be overlaid with bearing fault frequencies onto the post processed spectra to even calculate warning and alert levels.

In addition to the impressive list of post processing options available in the Analysis and Reporting Manager, SKF has Cepstrum, Power Cepstrum, and Power Spectrum. Cepstrum analysis is a tool for detecting periodicity in an FFT especially useful when diagnosing potential gear box failures. Power spectrum provides a plot of the portion of a signal's power (energy per unit time) for any given frequency in the FFT. The energy is measured at the cursor position.

### Customized reporting

The Analysis and Reporting Manager automatically imports data into your PC; it can then be browsed and manipulated using a familiar Explorer style tree display. Extensive context (pop up) menus and customizable toolbars allow simple manipulation and configuration of your data display (including customizing the colors and fonts used in the plots), and records can be moved around using the Windows clipboard or drag-and-drop feature. A large number of standard file formats are supported, including .WAV, ASCII and UFF (Universal File Format).

### Data management

The Analysis and Reporting Manager automatically stores data in data stream files which embed the original data and all user added settings such as cursors and ranges, as well as annotations and notes. Customizable text based reports can be generated from the data, and any record can be output as ASCII text or the graph plot copied to the clipboard as a bitmap file. All data can be saved to ASCII or UFF files or written directly into Microsoft Excel workbooks.



## Specifications

Data transfer:	Direct downloading of data from SKF Microlog Analyzer is done via Microsoft ActiveSync using USB, Windows Mobile Device Center 6.1 (if using Windows 7) or any other supported connection type.
Inputs:	<p>The following types of data can be input into the Analysis and Reporting Manager:</p> <ul style="list-style-type: none"> <li>Analyzer, Non-route, Bump Test, Frequency Response Function and Conformance Check results files (.csv and .ccr)</li> <li>Balancing module files (.txt)</li> <li>Data Recorder module files (.WAV)</li> <li>Run up Coast down module files (.WAV and .csv)</li> <li>Universal File Format type 58 (.uff)</li> <li>Native Analysis and Reporting Manager data stream files (.pds)</li> <li>Single or multiple column ASCII file format (.txt)</li> <li>Microsoft Excel workbooks (requires Excel 2000 and / or Word 2000 or later on host)</li> </ul>
Outputs:	<ul style="list-style-type: none"> <li>Data may be output in general X-tab-Y column format ASCII files, UFF type 58 files, Microsoft Excel workbooks and Analysis and Reporting Manager data stream files. Data may be copied to the clipboard (as both ASCII and data stream formats).</li> <li>Graphs may be copied to the clipboard as bitmaps.</li> <li>Multiple records may be output as a single, multiple column ASCII file or Microsoft Excel worksheet.</li> <li>Time waveform data may be used to produce single spectrum or waterfall plots using FFT analysis.</li> <li>Processed data is automatically stored in Analysis and Reporting Manager data stream files.</li> <li>Microsoft Word documents may be created directly from data, either via template files using bookmarks as placeholders, or to blank documents.</li> </ul>
UFF options:	Output to UFF files includes user specification of reference and response node information and supports the SKF convention on embedding this information in the analyzer record names. All records may be output to a single UFF file or individual files as required.

## Hardware requirements

### Stand-alone configuration

- Running Analysis and Reporting Manager
- Storing data

Configuration	Minimum requirements	Recommended requirements
Operating system:	Windows 7 <b>OR</b> Windows XP Professional with Service Pack 2+	Windows 7 <b>OR</b> Windows XP Professional with Service Pack 2+
Processor:	Intel 1.0 GHz, 32-bit (x86), or better	Intel Core 2 Duo, 2.0 GHz, or better
RAM:	1.0 GB	8 GB or more
Disk space available for stand-alone computer:	1.2 GB	1.2 GB or more
DVD drive:	<b>One (1) required</b>	<b>One (1) required</b>
Video display:	1280 × 1024	1280 × 1024 or larger

**USB port for data transfer.**

## Ordering information

The Analysis and Reporting Manager is available in the following configurations:

- CMSW 7311-SL Analysis and Reporting Manager stand-alone PC based application
- CMSW 7400 Analysis and Reporting Manager integrated into SKF @ptitude Analyst
- CMSW 7300 Analysis and Reporting Manager integrated into SKF @ptitude Analyst for SKF Microlog Analyzer and SKF Multilog On-line System WMx

# SKF Product Support Plans

Protecting your technology investment: Hardware and Software

## SKF Product Support Plan

SKF is committed to customer support excellence. The goal of a SKF Product Support Plan (PSP) is to help you increase and optimize your return on investment in SKF products. This includes extending the life of their product and facilitating the success of their program. This allows you to compete in your industry, save downtime and be on the cutting edge of technology.

SKF Product Support Plans give you full confidence that your equipment is maintained to the SKF quality standards. Condition monitoring products are an investment and there is no better way to protect your investment for years than with a SKF Product Support Plan.

For additional information go to [SKF Product Support Plans](#).

## Greater peace of mind

### Hardware

- Unlimited telephone technical support
- E-mail / web-based technical support
- Firmware maintenance releases and updates
- Hardware repairs, modifications, and proactive maintenance
- Unlimited calibration
- Annual Preventive Maintenance (APM) service
- Hardware loaner units
- Courier return shipping after repair or maintenance
- SKF Knowledge Centre subscription
- SKF Technical Support Self-Help Portal access
- Live webinar training notifications

### Software

- Unlimited telephone technical support
- E-mail/web-based technical support
- Live chat technical support
- Software maintenance releases
- Software updates
- Remote Workstation access
- SKF Knowledge Centre subscription
- SKF Technical Support Self-Help Portal access
- Live webinar training notifications
- Web-based e-Learning courses



Please contact:

**SKF USA Inc.**

**Condition Monitoring Center – San Diego**

5271 Viewridge Court • San Diego, California 92123 USA

Tel: +1 858-496-3400 • Fax: +1 858-496-3531

**Web: [www.skf.com/cm](http://www.skf.com/cm)**

© SKF, @PTITUDE, MICROLOG, and MULTILOG are registered trademarks of the SKF Group.

Bluetooth is a registered trademark of Bluetooth SIG, Inc.

ICP is a registered trademark of PCB Group, Inc.

Intel and Intel XScale are registered trademarks of Intel Corporation in the United States and other countries.

Marvell is a registered trademark of Marvell or its affiliates.

Microsoft, Windows, ActiveSync, Excel, PowerPoint, SQL Server, Windows Server and Windows Vista are either registered trademarks or trademarks of Microsoft Corporation in the United States and / or other countries.

Oracle is a registered trademark of Oracle Corporation.

All other trademarks are the property of their respective owners.

© SKF Group 2016

The contents of this publication are the copyright of the publisher and may not be reproduced (even extracts) unless prior written permission is granted. Every care has been taken to ensure the accuracy of the information contained in this publication, but no liability can be accepted for any loss or damage whether direct, indirect or consequential arising out of the use of the information contained herein. SKF reserves the right to alter any part of this publication without prior notice.

Patents: US 4,768,380 · US 5,633,811 · US 5,679,900 · US 5,845,230 · US 5,852,351 · US 5,854,553 · US 5,854,994 · US 5,870,699 · US 5,907,491 · US 5,992,237 · US 6,006,164 · US 6,124,692 · US 6,138,078 · US 6,199,422 · US 6,202,491 · US 6,275,781 · US 6,301,514 · US 6,437,692 · US 6,489,884 · US 6,513,386 · US 6,633,822 · US 6,789,025 · US 6,792,360 · US 7,103,511 · US 7,697,492 · WO/2003/048714

PUB CM/P1 14285/4 EN · February 2016