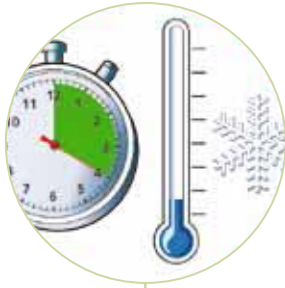


Surface Preparation and Emergency Repair

Preparation, Protection and Repair



Why Use a LOCTITE activator or primer?

Henkel offers a complete range of activators and primers providing solutions for the following LOCTITE adhesive technologies:

1. LOCTITE activators / primers for instant bonding (cyanoacrylates)

LOCTITE primers are used for improving adhesion to substrates. They are applied before the adhesive. For low surface energy plastic substrates, e.g. polyolefin, PP, PE, best adhesion will be achieved with LOCTITE 770 / 7701.

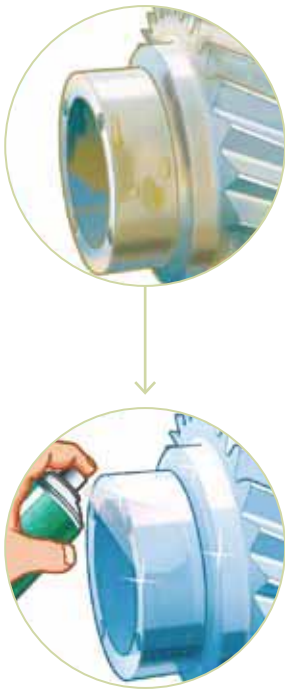
LOCTITE activators are used to increase cure speed. Loctite activators are mostly applied before the adhesive. Heptane-based activators have good “on-part life” and provide for a good aesthetic appearance of the bondline. They are also suitable for use on plastics which are sensitive to stress cracking. Activators can also be applied after the adhesive, e.g. for curing residual adhesive. They provide for an excellent cosmetic appearance by avoiding white staining of instant adhesives.

2. LOCTITE activators for modified acrylics

LOCTITE activators for modified acrylics are needed to initiate the curing process. Usually, the activator is applied to one surface and the modified acrylic to the other surface. The curing process starts when the two parts are assembled. Fixture time is dependent on the adhesive, on the substrate and on the cleanliness of the surfaces.

3. LOCTITE activators for threadlocking, pipe and thread Sealing, gasketing, retaining and anaerobic acrylics

LOCTITE activators for this group of adhesives are used to increase the cure speed of the products. They are recommended for applications on passive metals such as stainless steel, plated or passivated surfaces. Activators are available as solvent-based or solvent-free formulations.



Why use a LOCTITE surface preparation product?

The LOCTITE portfolio of surface preparation products offers solutions for all types of surface treatments or preparations. All products are easy to use and thus ideal for maintenance and line production.

1. Protection of Welding Equipment

Protect shroud and contact tip from welding spatter and ensure uninterrupted welding for a complete shift.

2. Belt Dressing

Prevent slippage and increase friction for all types of belts.

3. Rust Treatment

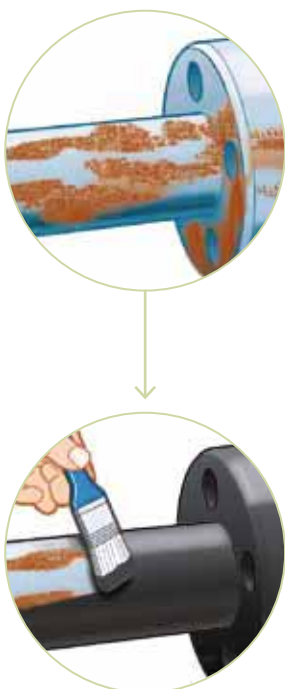
Conversion of rust into a stable base – treated surface can be overpainted.

4. Corrosion Protection

Protect surfaces against corrosion – drying and non-drying product available.

5. Tamper Proofing

Visually detect movements in adjusted parts.



Why use a LOCTITE emergency repair product?

Whatever your working environment, unpredictable and emergency situations can happen and in most of the cases need to be sorted out within a very short timeframe. Our range of emergency repair products helps you to avoid unnecessary downtime and costs. All of them are easy to apply, enabling you to deal with emergencies quickly. More than this, some will also help you to increase the reliability of your industrial equipment.

1. O-Ring Replacement

O-rings can be made as and when required, avoiding the need to stock.

2. Freeing of Corroded Parts

Releasing rusted, corroded and seized components using the shock freeze effect.

3. Detection of Pipe Leaks

Easy-to-apply system for location of small leaks in iron, copper and plastic pipes.

4. Sealing of Leaks




For emergency sealing of tanks, pipes and castings without the need to replace components.

5. Taping

For immediate fixing and protection of various materials.

Surface Protection

Product Table

Solution	Rust treatment	Corrosion protection	
		Short-term	Long-term
		Flash rust prevention	Ferrous metals
			Finish
	LOCTITE SF 7500 	LOCTITE SF 7515 	LOCTITE SF 7800 
Description	Rust treatment	Flash rust prevention	Zinc spray
Colour	Matt black	Amber liquid	Grey
Service temperature range	–	–	-50°C to +550°C
Pack sizes	1 ltr can	5 ltr, 20 ltr	Not available in the U.K.
	LOCTITE SF 7500 Rust treatment <ul style="list-style-type: none"> • Converts existing rust into a stable base • Protects surfaces from corrosion • Cured product acts as a primer ready for painting • For metal pipes, valves, fittings, storage tanks, fences, guard rails, conveyors, construction and agricultural equipment 	LOCTITE SF 7515 <ul style="list-style-type: none"> • Pre-treatment on large surfaces, giving protection against flash rust for up to 48 hours 	LOCTITE SF 7800 Zinc spray <ul style="list-style-type: none"> • Excellent cathodic corrosion protection on ferrous metals • Restores protection to galvanised parts • Typical applications: Touching-up of metal parts after welding, long-term protection of metal assemblies

Protection of welding equipment

Tamper proofing

Belt dressing

Long-term

General purpose

Non-drying

General purpose

Electronic components

LOCTITE SF 7803

LOCTITE SF 7900 Ceramic Shield

LOCTITE SF 7414

LOCTITE SF 7400

LOCTITE SF 8005



Metal protection coating

Ceramic, silicone-free protective coating

Detect movements of parts

Detect movements of parts

Liquid spray

White

White

Blue

Red

Clear yellow

-30°C to +60°C

–

-35°C to +145°C

-35°C to +145°C

–

Not available in the U.K.

400ml aerosol

50ml

20ml, 500ml

Not available in the U.K.

LOCTITE SF 7803 Metal protection coating spray

- Non drying, tack free coating
- Provides long term corrosion protection
- For iron, steel, sheet steel, pipes, moulds, machines and installations that have to be stored outdoors

LOCTITE SF 7900 Ceramic Shield

- Prevents adhesion of welding spatter
- Provides long term protection to welding equipment and ensures reliable, uninterrupted processes
- Excellent adhesion to the surface
- Eliminates the need for cleaning processes

LOCTITE SF 7414 Tamper proofing

- Visually detect movement of adjusted parts
- Use for fittings, studs, nuts, etc.
- Good adhesion to metals
- Non corrosive
- Also for outdoor applications

LOCTITE SF 7400 Tamper proofing

- Visually detect movement of adjusted parts, mark adjustment points, or mark components that have been set or tested
- Use for electronic equipment
- Good adhesion to a wide range of substrates

LOCTITE SF 8005 Belt dressing

- Prevents slippage
- Increases friction for all types of belts
- Extends belt life